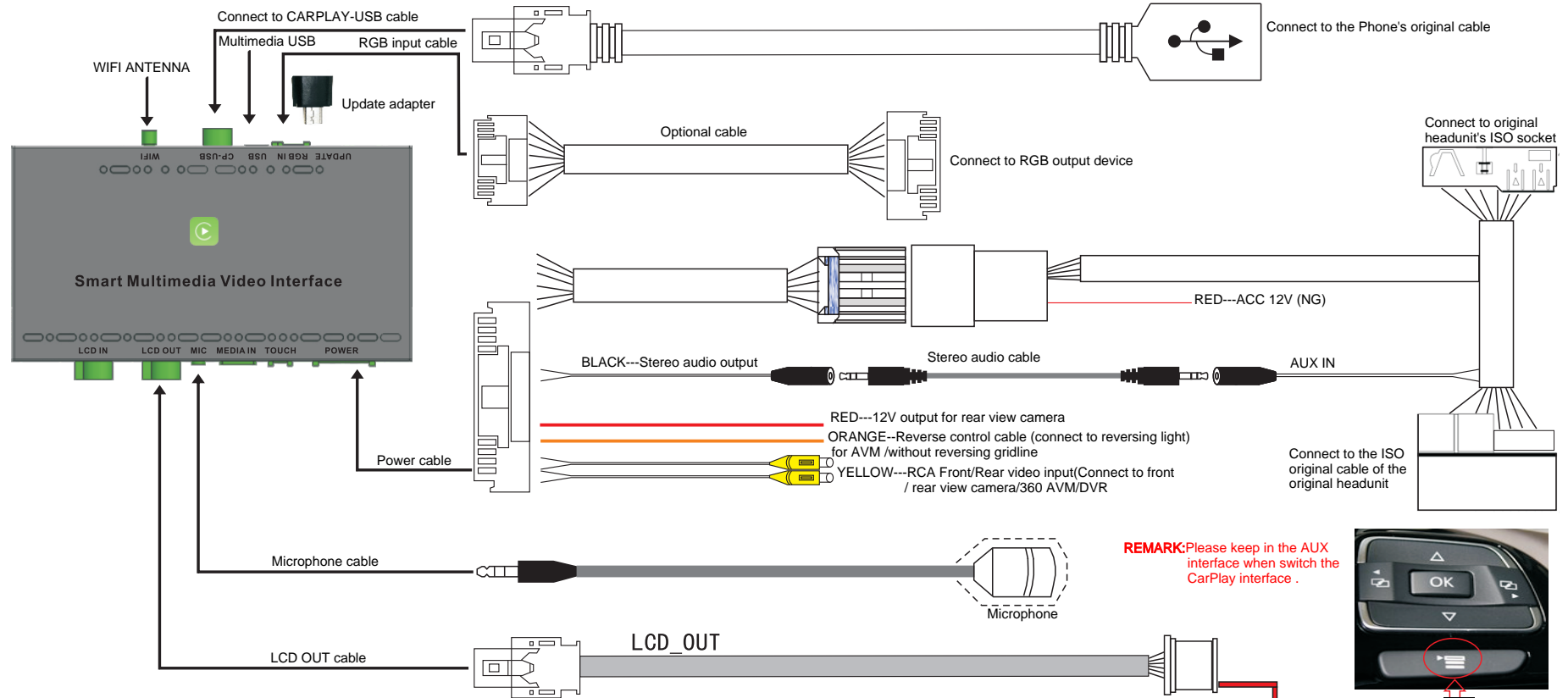
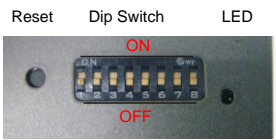


VW Touareg (6.5 inch) WIRING DIAGRAM ---LDS-VWT65-CP

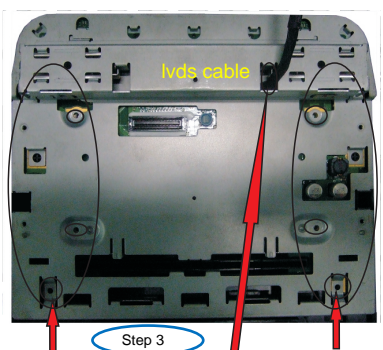


REMARK:Please keep in the AUX interface when switch the CarPlay interface .

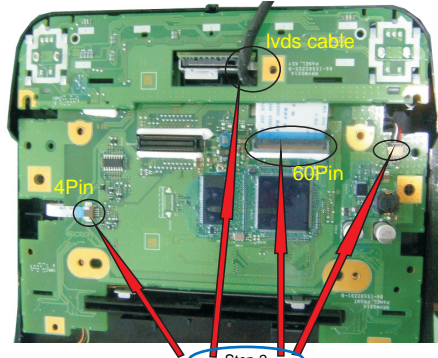


DIP SWITCH SETTING
(After changing the dip code,press "reset"or power-on again)

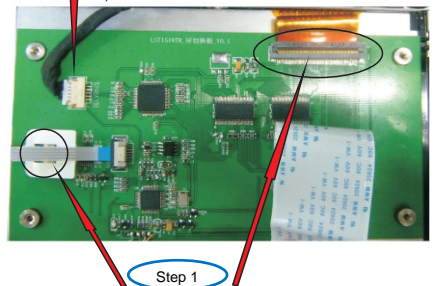
DIP	S/W	Status	Function
PIN 1	OFF/ON	NG / NG	
PIN 2	OFF/ON	NG/Touch point coordinate correction,and then turn"OFF"	
PIN 3	OFF/ON	NG / NG	
PIN 4	OFF/ON	Reversing gridline/Enable 360 panoramic	
PIN 5	OFF/ON	NG / NG	
PIN 6	OFF/ON	Rear view camera CVBS input / RGB input	
PIN 7	OFF/ON	NG / NG	
PIN 8	OFF/ON	After market rear view camera/Original rear view camera	



4) Cover back housing and lock screws (Notice the position of the LVDS cable, as shown above).



2) Recover the original panel board and keyboard. (Notice the position of the LVDS cable,as shown above)
3) Connect the 4P&60P cable from the pinboard to the original panel board,as shown above.



1)Open the original monitor,and install the panel pinboard behind the original panel,plug in the panel&LCD OUT cable as shown above.
Remark:An insulating strip needs to be attached to the back of the panel pinboard

- 1) Long press and hold "MENU" button to switch MENU, long press "MENU" button again, exit the switch MENU.
- 2) Other functions use touch screen to control it.

