

K2 POWER E 30 KX 12" Subwoofer

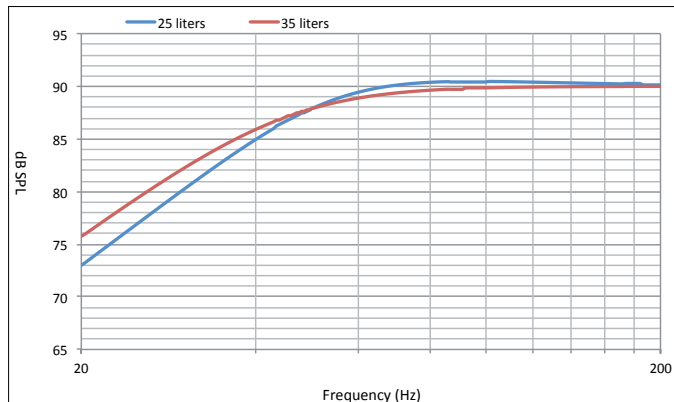


- K2 Power sandwich cone
- Aluminum basket
- Dual voice coil (2x40hms)

SPECIFICATIONS

Nominal power	800W RMS	
Maximum power	1600W	
Sensitivity (2.83V/1m)	90dB	
Cone	Kevlar sandwich	
Surround	Butyl	
Nom. impedance	4+4 Ω	
DC resistance	3.2+3.2 Ω	
VC diameter	65mm	2 ⁹ / ₁₆ "
Former	Glass fiber	
Layers	4	
Wire	CCAW	
Net weight	11.2kg	24.7lbs
Driver Displacement	4l	0.14 cu.ft.

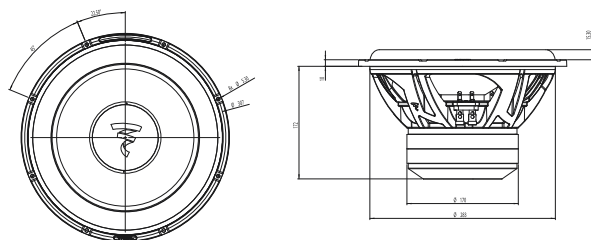
FREQUENCY RESPONSE



PARAMETERS

Rdc	3.2+3.2 Ω	
Fs	29Hz	
Mms	183g	
Cms	0.15mm/N	
Vas	50l	
Qts	0.46	
Qes	0.49	
Qms	6.1	
Bxl	21.3 N/A	
Sd	502cm ²	
SPL	87dB	
Xmax	22.5mm	

MECHANICAL DRAWING



SUGGESTED APPLICATION

Sealed enclosure

Volume	F-3 (Hz)
28L 0.99 cu.ft.	45Hz
35L 1.23 cu.ft.	41Hz

Ported enclosure

Volume	F-3 (Hz)	Ø event Ø port	LG event Port length
28L 0.99 cu.ft.	38Hz	10cm 4"	45cm 18"
50L 1.76 cu.ft.	30Hz	10cm 3 ¹⁵ / ₁₆ "	40cm 15 ³ / ₄ "

