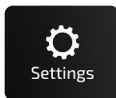
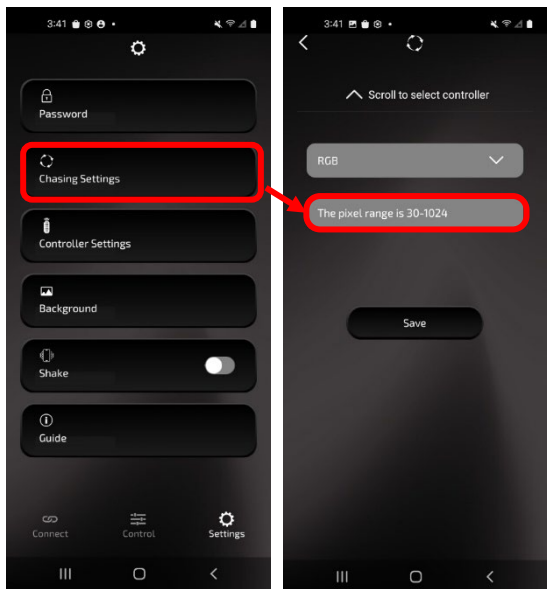


How to change Pixel Counts



Click Settings > Chase Settings > Scroll to controller > Using chart, set Pixels > Click Save.



Group	Part number	Set Controller Pixel Count To:	Group	Part number	Set Controller Pixel Count To:
Headlights	JP-707RGBKT	36	5M Strip	HE-CHASE-5M	150
	JP-708RGBKT	36	Whips	MPS-CHWP-1	43
	JP-709RGB	77	Lightbars	HE-CHASE-B8	30
	JP-901RGB	91		HE-CHASE-B12	30
		HE-CHASE-B22		30	
Wheel Lights	HE-CHASE-W14	30	HE-CHASE-B32	30	
	HE-CHASE-W155	30	Cube Lights	HE-CHASE-CLKT	30
	HE-CHASE-W17	30	HE-CHASE-FCLKT	30	
	HE-CHASE-WS	30	Vehicle Kits	BC-CHASE-K1	30
HE-CHASE-WL	30	BC-CHASE-K2		30	
Underglow	HE-CHASE-UNDGKT	42	Add on	HE-CHASE-T9	30
	MPS-UNDG-KT1	36		HE-CHASE-12	30
Rock Lights	HE-CHASE-4KT	30		HE-CHASE-T18	30
	HE-CHASE-8KT	30		HE-CHASE-T28	36
	HE-CHASE-R1	+6 Added 30 standalone		HE-CHASE-T48	42
	HE-CHASE-K4	36		HE-CHASE-R1	+6
	HE-CHASE-K8	72			
HE-CHASE-EX4	30				
Ambient	HE-AMB-2KT	94			
	HE-AMB-2DR	94			
	HE-AMB-CAR	67			
Interior	HE-CHASE-INT	30			
Exterior	HE-CHASE-GRILLE	30			
	HE-CHASE-BED	30			

Online Support: Scan QR codes

App Support online

Heise Connect app

