

Wireless Charging Module
241320-00-1 (10W)
241320-00-2 (15W)



WIRELESS CHARGING

VW Arteon · Golf Sportsvan · Passat · Polo
T-Cross · T-Roc · Taigo · Tiguan II

SEITE PAGE	FAHRZEUG / VEHICLE	LINKSLENKER / LEFT-HAND-DRIVE	RECHTSLENKER / RIGHT-HAND-DRIVE
		GUMMIMATTE MIT WIRELESS CHARGING SYMBOL (OPTIONAL) RUBBER MAT WITH WIRELESS CHARGING ICON (OPTIONAL) VW ORIGINAL-TEILENUMMER / VW ORIGINAL PART NO.	
4-13	VW Arteon (3H) Facelift 11/2020>	3G1 863 416 D	–
14-21	VW Golf Sportsvan (5G) Facelift 10/2017 - 06/2020	517 863 328 E	517 863 328 E
4-13	VW Passat (B8) Facelift 09/2019> / VW Passat Variant (B8) Facelift 09/2019>	3G1 863 416 D	–
22-29	VW Polo (AW1) 11/2017 - 05/2021 / VW Polo (AW1) Facelift 09/2021> VW Taigo (CS) 10/2021> *(Gummimatte + Einbaurahmen werden zusätzlich benötigt) *(Rubber mat + mounting frame required)	benötigt / required : 2G1 863 330 B + Einbaurahmen/Mounting Frame: benötigt / required : 2G1 864 981 A	benötigt / required : 2G2 863 330 B + Einbaurahmen/Mounting Frame: benötigt / required : 2G2 864 981 A
30-37	VW T-Cross (C1) 04/2019>	2GM 863 330 A	2GM 863 330 A
38-46	VW T-Roc (A1) 01/2019 - 10/2021 / VW T-Roc (A1) Facelift 01/2022> VW T-Roc Cabriolet (A1) 03/2020 - 10/2021 VW T-Roc Cabriolet Facelift (A1) 03/2022>	2GA 863 328 C	2GB 863 328 B
48-72	VW Tiguan II 2016> / VW Tiguan II (Facelift) 2020> VW Tiguan Allspace 2017> / VW Tiguan Allspace (Facelift) Fahrzeuge mit fest verbauter Ablage benötigen eine neue OEM-Mittelkonsole: VW Teile-Nr.: 5NB 863 241 F xxx / X = verschiedene Farbvarianten. Bsp: 82V titanschwartz Vehicles with closed tray require a new OEM center console VW part-no.: 5NB 863 241 F xxx / X = different OEM colours. example: 82V titan black	5NB 863 330 A Allspace: 5NN 863 330 A	5NC 863 330 C Allspace: 5NM 863 330 B



Blinddeckel / detachable inlay



VW Polo



VW Modelle mit einer einteiligen fest verbauten Ablage unter der Gummimatte sind leider nicht kompatibel.

VW models with a one-piece solid storage shelf below the rubber mat are not compatible.

ACHTUNG!

Bitte überprüfen Sie vor der Installation durch Anheben der OEM-Gummimatte, ob das Fahrzeug mit einem Blinddeckel ausgestattet ist - das gilt nicht für VW Polo Modelle, da für diese ein separater Einbaurahmen (Teile-Nr.: 2G1 864 981 A - siehe Liste) bestellt werden muss.

ATTENTION! Before installation, please check if your VW is equipped with a detachable inlay below the rubber mat — this is not applicable for VW Polo models, as for these an mounting frame (Part-no.: 2G1 864 981 A - see list) has to be ordered separately.

Sachgemäße Installation unter Beachtung dieser Einbauanleitung erforderlich. Achten Sie auf korrekte Anschlüsse. Verlegen Sie die Kabel so, dass Sie weder geknickt, gequetscht oder beschädigt werden können. Sorgen Sie dafür, dass sich die Kabel nicht in Gegenständen verfangen können. Wir können keine Haftung für Schäden übernehmen, welche durch unsachgemäße Installation oder Nutzung verursacht wurden. Verwenden Sie darum ausschließlich das mitgelieferte Montagematerial.

Technische Änderungen vorbehalten, alle Angaben ohne Gewähr. Das „Qi“ Logo ist Warenzeichen des „Wireless Power Consortium“

An appropriate installation in observance of these operating instructions is necessary. Please make sure the wiring is arranged so it is not bended or crimped due to the risk of cable break. Make sure that all connections are correct. Route the cable away from moving parts, do not allow the cable to be entangled, pinched or damaged in any way. We will not be liable for damage due to improper installation or utilization. Use the specified accessory parts to prevent product failure. Subject to technical modifications; no responsibility is accepted for the accuracy of this information. The “Qi” symbol is a trademark of the “Wireless Power Consortium”

INTEGRATED FOREIGN OBJECT DETECTION (FOD)

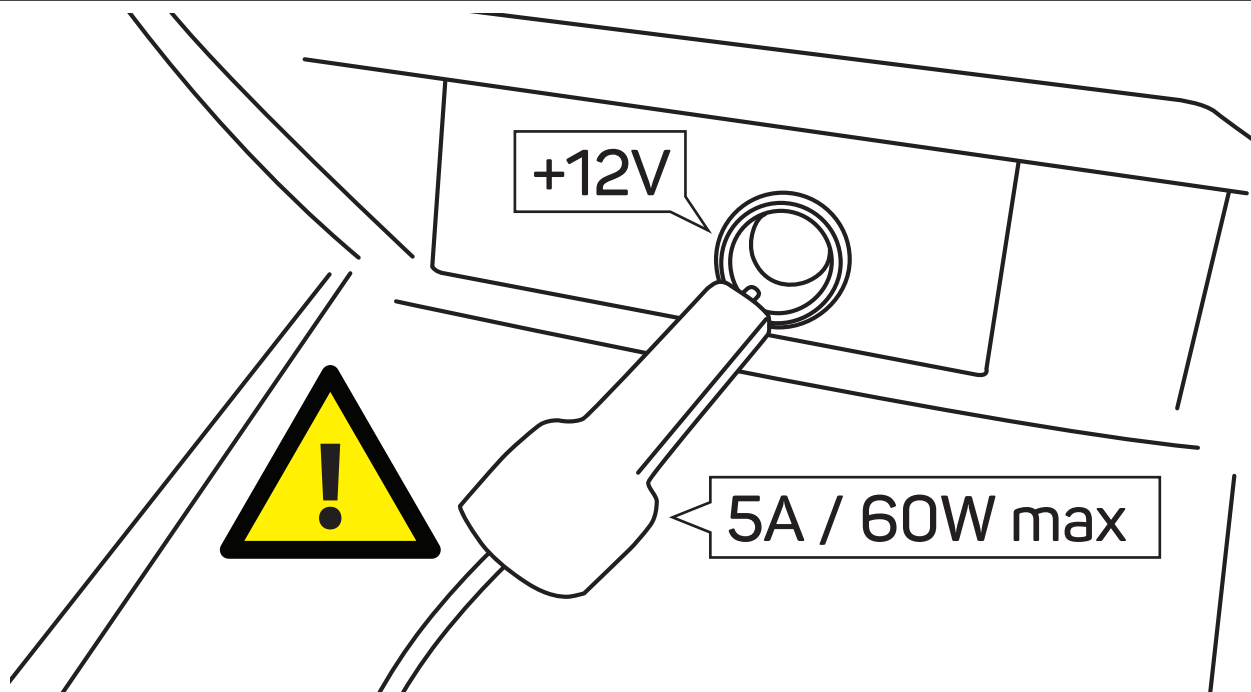
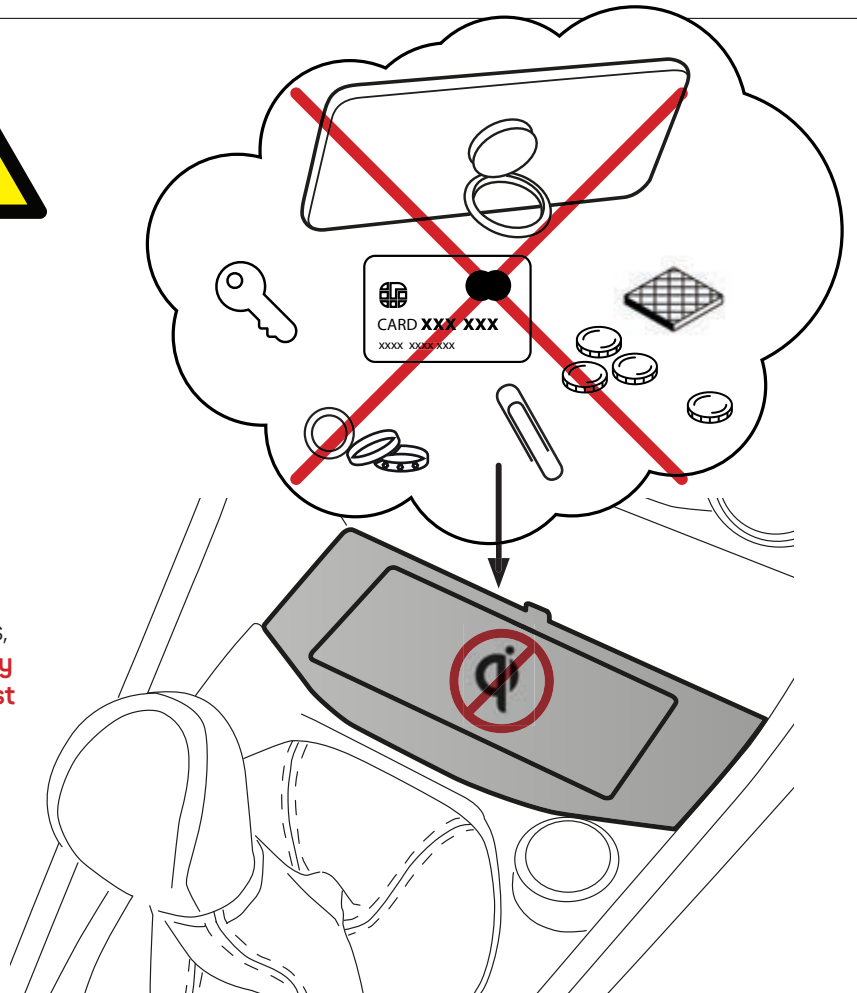


WICHTIGE INFORMATION:

Bitte legen Sie keine anderen Gegenstände wie z.B. Münzen, Kreditkarten etc. in die INBAY Ablage. **Insbesondere Smartphones mit angebrachtem Ring Ständer dürfen nicht verwendet werden** - da ansonsten aus Sicherheitsgründen der Ladevorgang durch die integrierte Fremdeilerkennung (FOD) gestoppt wird.

IMPORTANT INFORMATION:

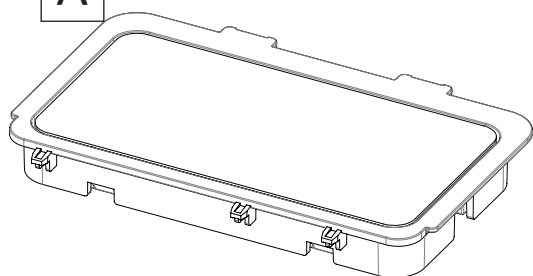
Please don't place any other objects such as coins, credit cards etc. onto the INBAY surface. **Especially smartphones with attached ring stand holder must not be used!** - otherwise the integrated Foreign Object Detection (FOD) will interrupt wireless charging for safety reasons.



ACHTUNG! Nach der Installation dürfen keine Geräte/Verbraucher mit mehr als **5A / 60W** an der +12V Buchse betrieben werden, da sonst die Gefahr einer Überspannung besteht!

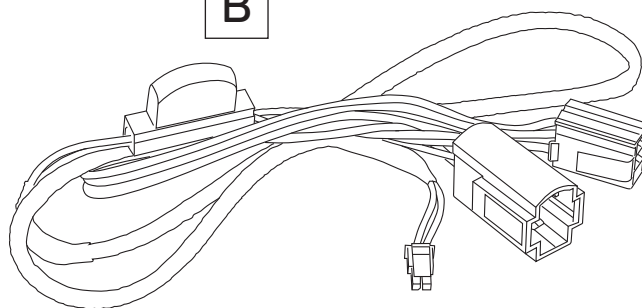
ATTENTION! After installation, devices/consumers with more than **5A / 60W** shall not be operated on the +12V socket. Otherwise a risk of overvoltage can occur!

A



INBAY Wireless Charging unit

B



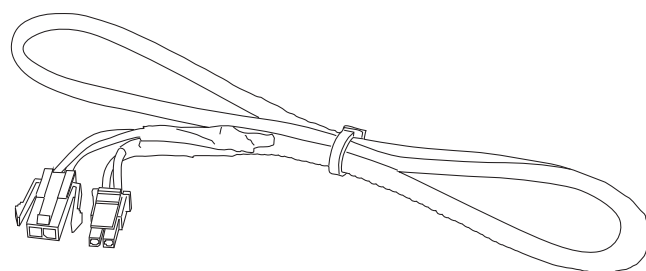
INBAY power supply

241320-00-1 (10W)

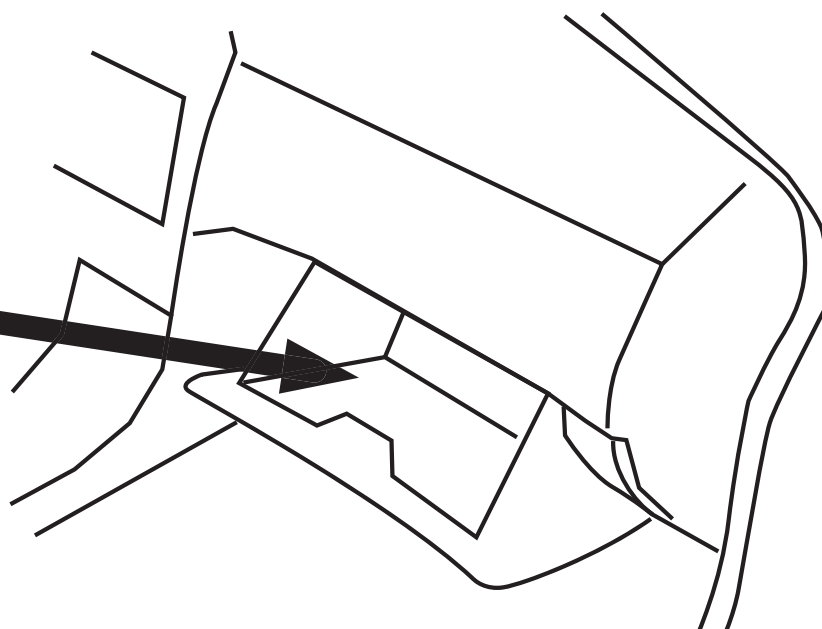
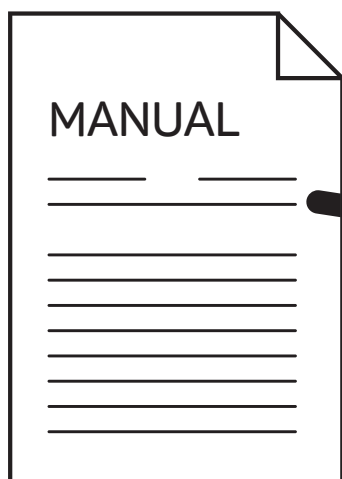
Input Voltage	12V (DC)	
Output Voltage	5V	9V
Output Current	1.1A	1.2A
Output Power	5W	10W

241320-00-2 (15W)

Input Voltage	12V (DC)		
Output Voltage	5V	9V	9V
Output Current	1.1A	1.2A	1.6A
Output Power	5W	10W	15W



INBAY extension cable



WICHTIG! NACH DER INSTALLATION MUSS DIESE EINBAUANLEITUNG IN DAS HANDSCHUHFACH DES KUNDENFAHRZEUGS GELEGT WERDEN.

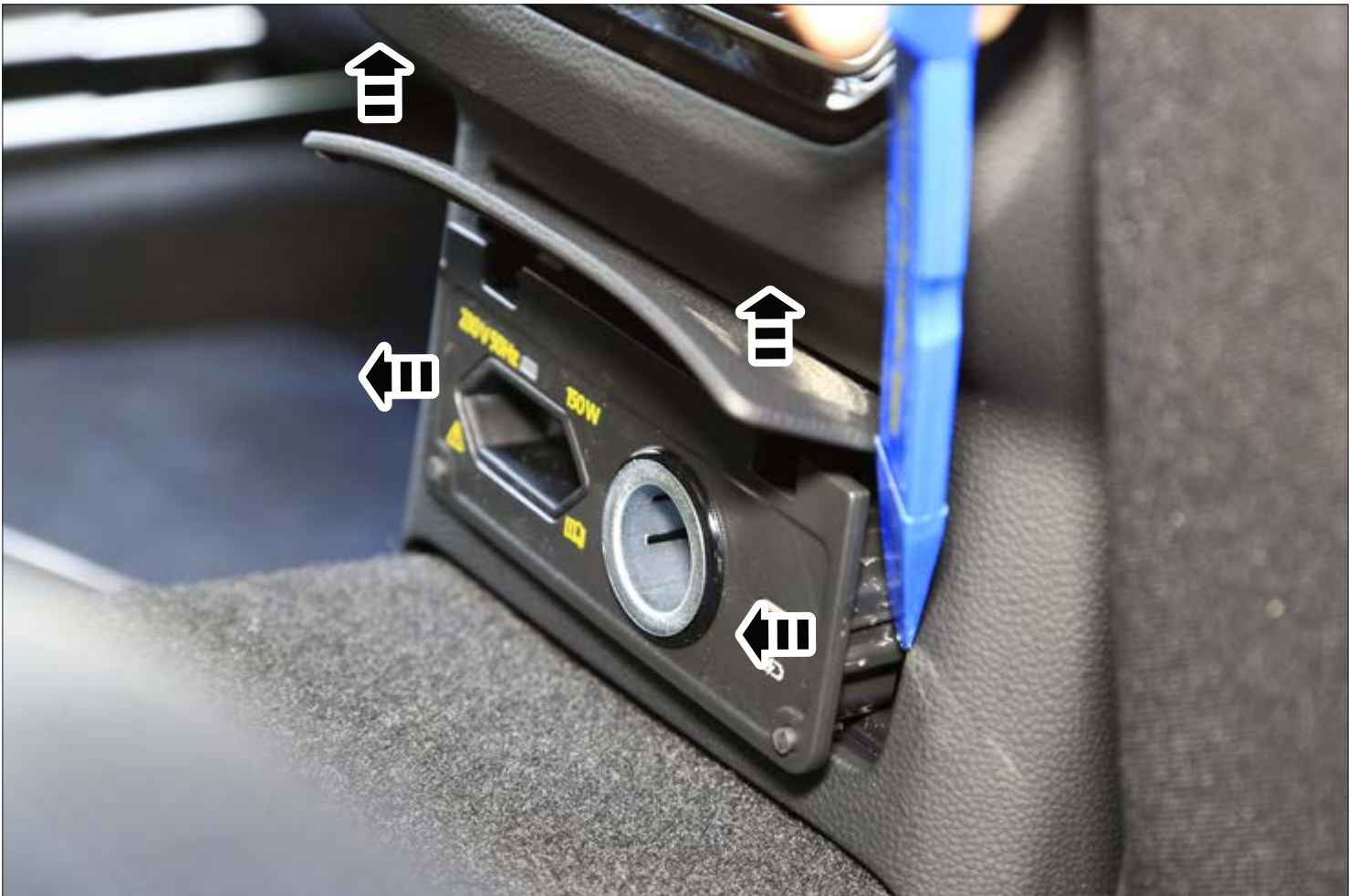
IMPORTANT! AFTER INSTALLATION THE MANUAL HAS TO BE PLACED INTO THE DASH BOARD OF THE CUSTOMER'S CAR.

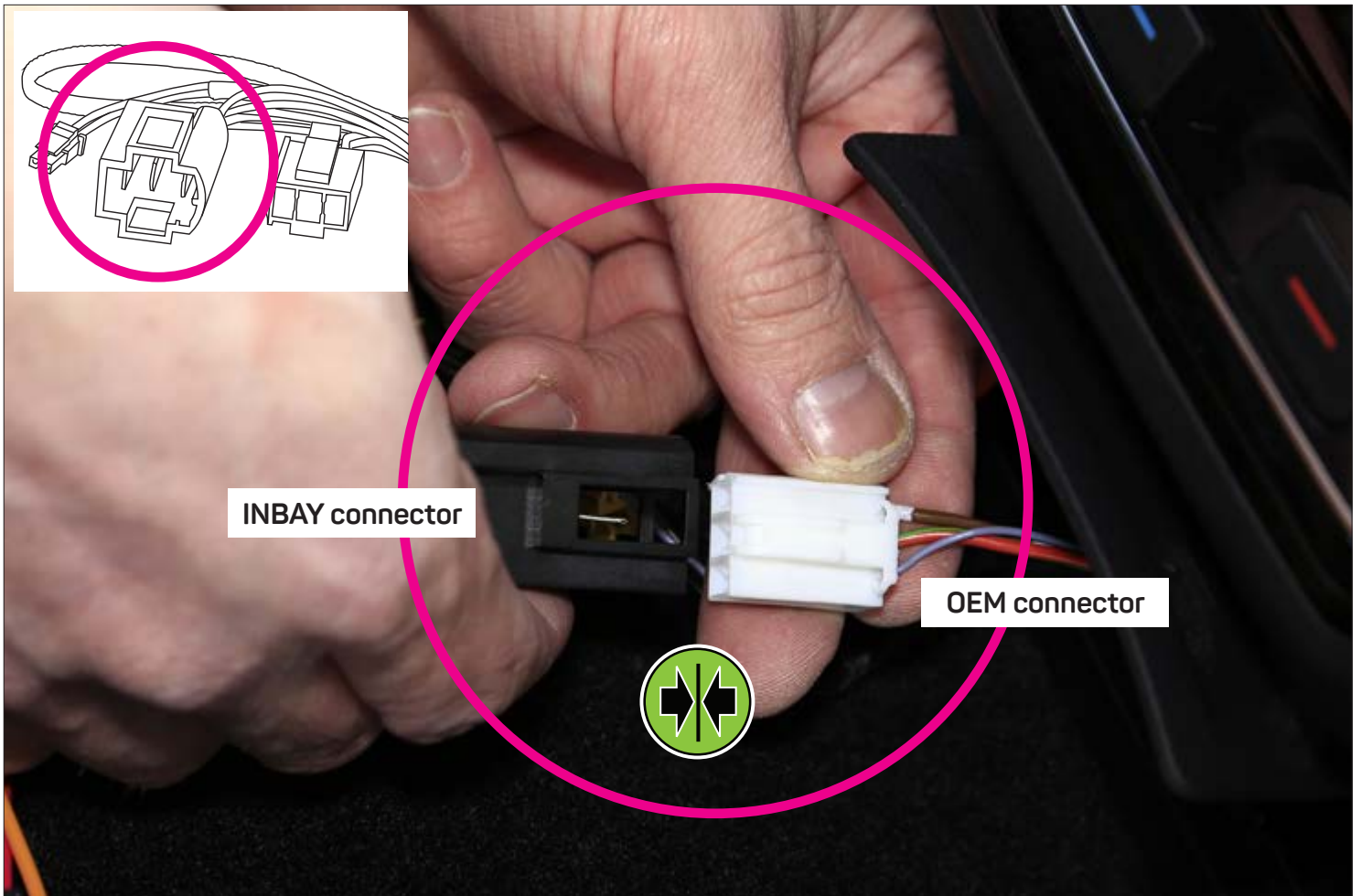
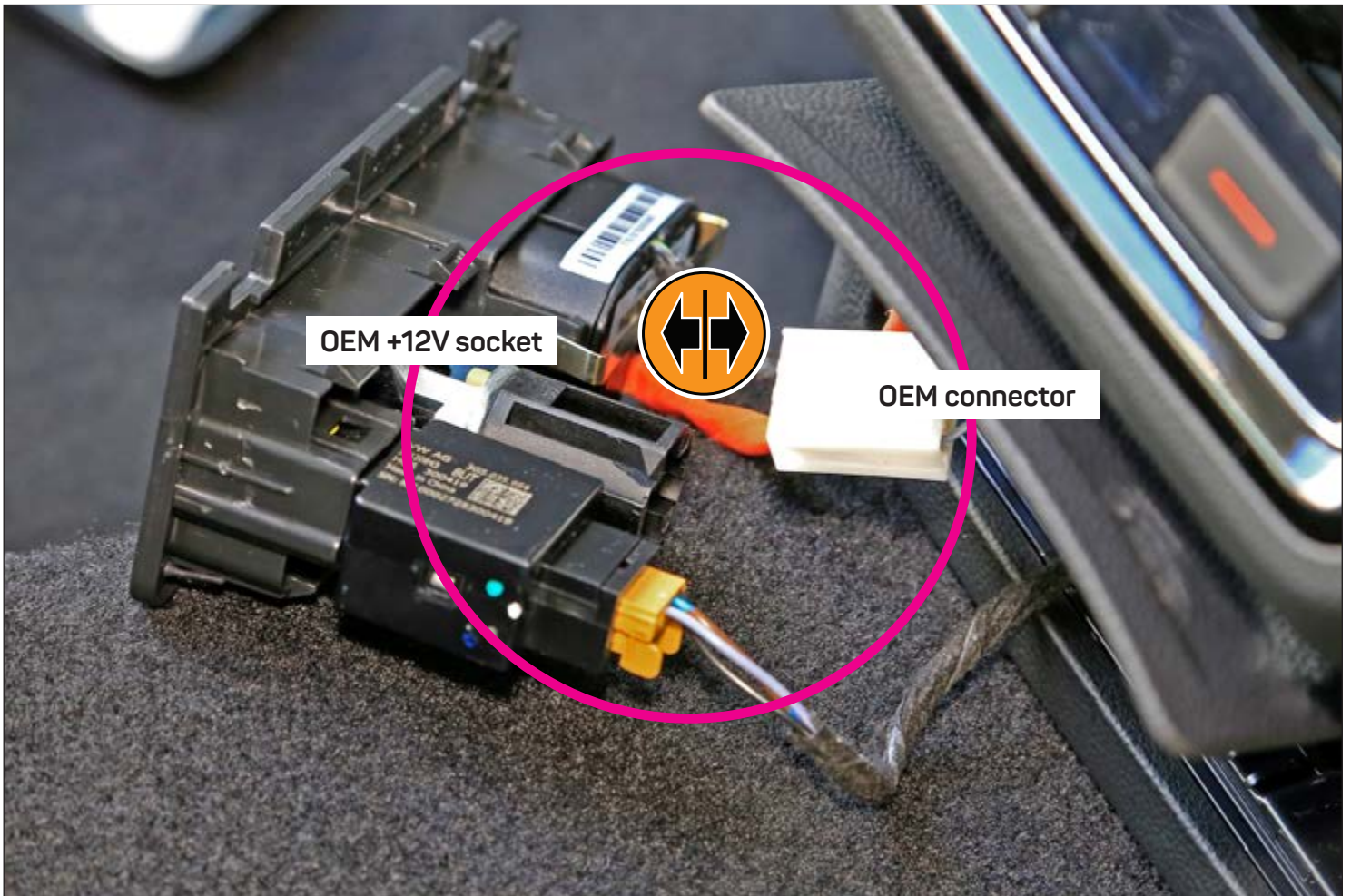
VW Arteon 2020

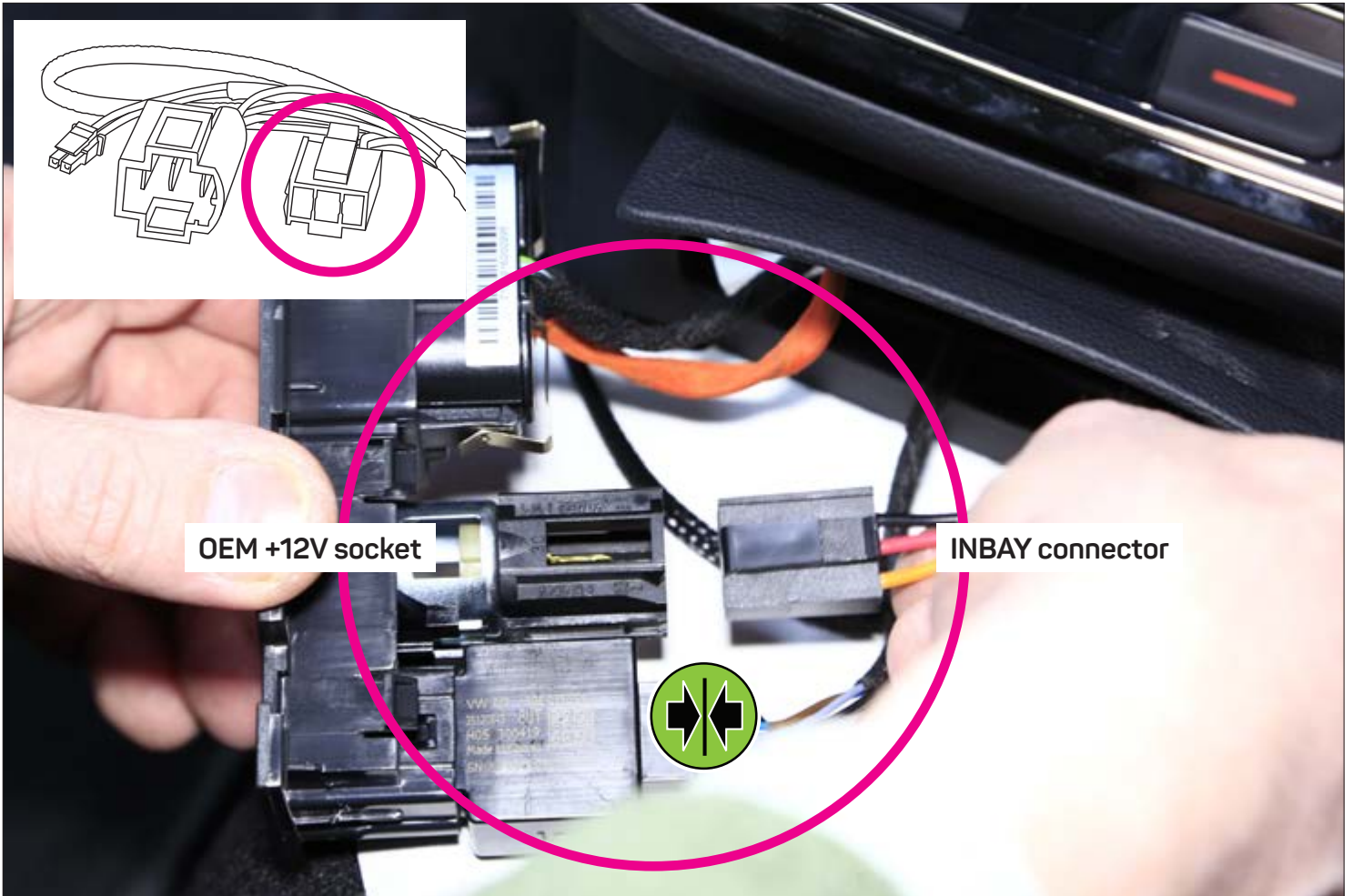


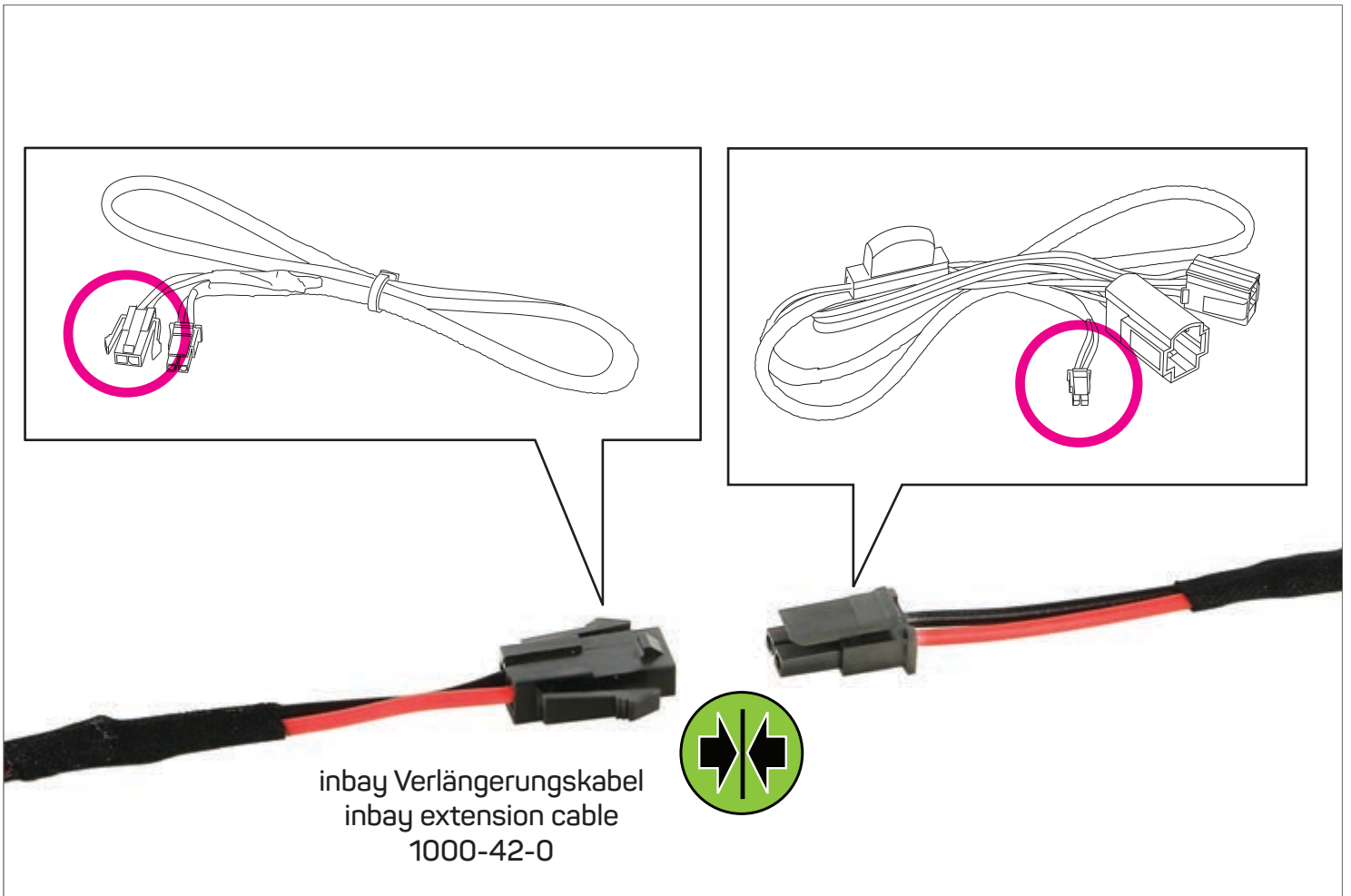
VW Passat / Passat Variant 2020

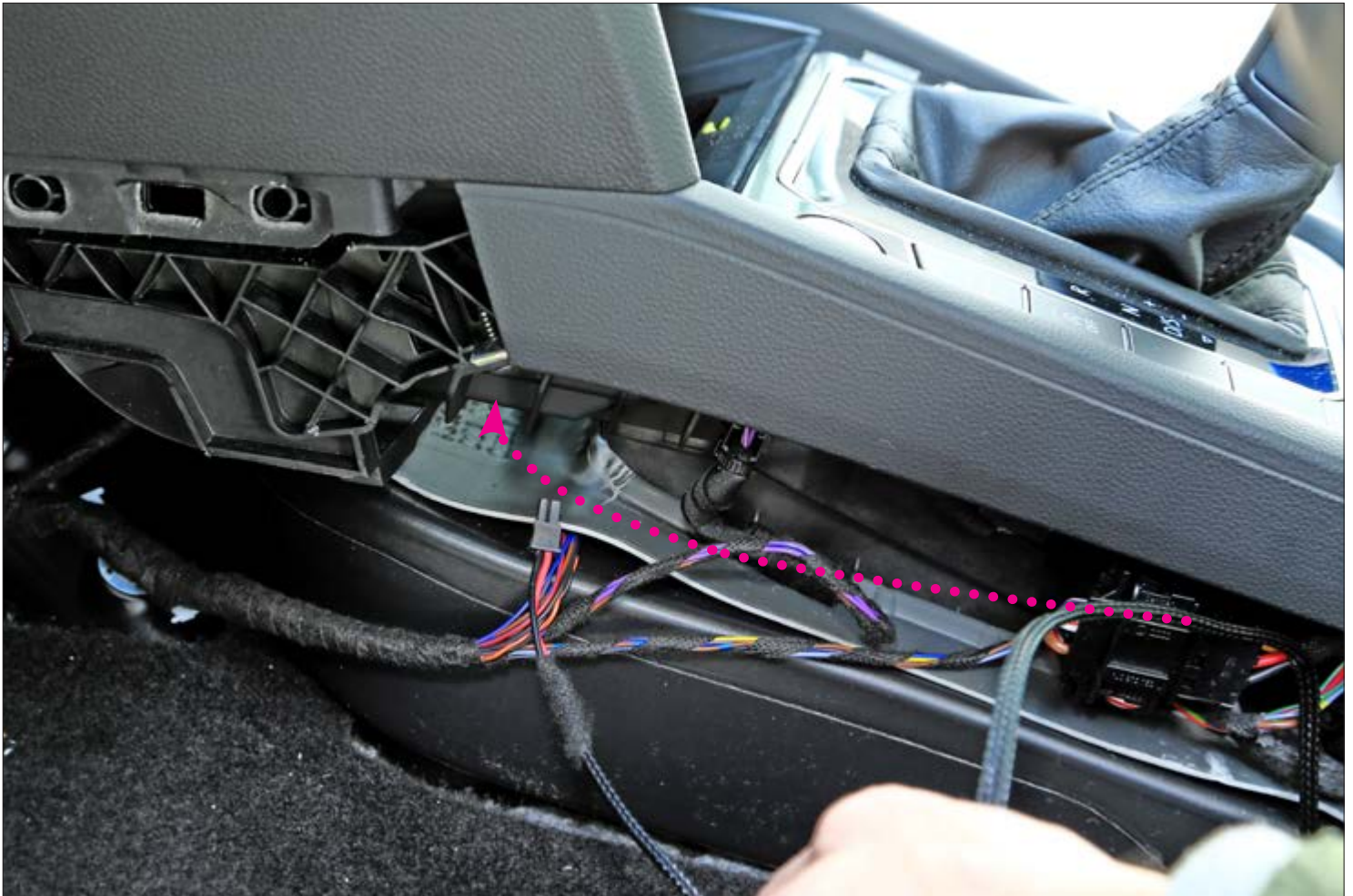




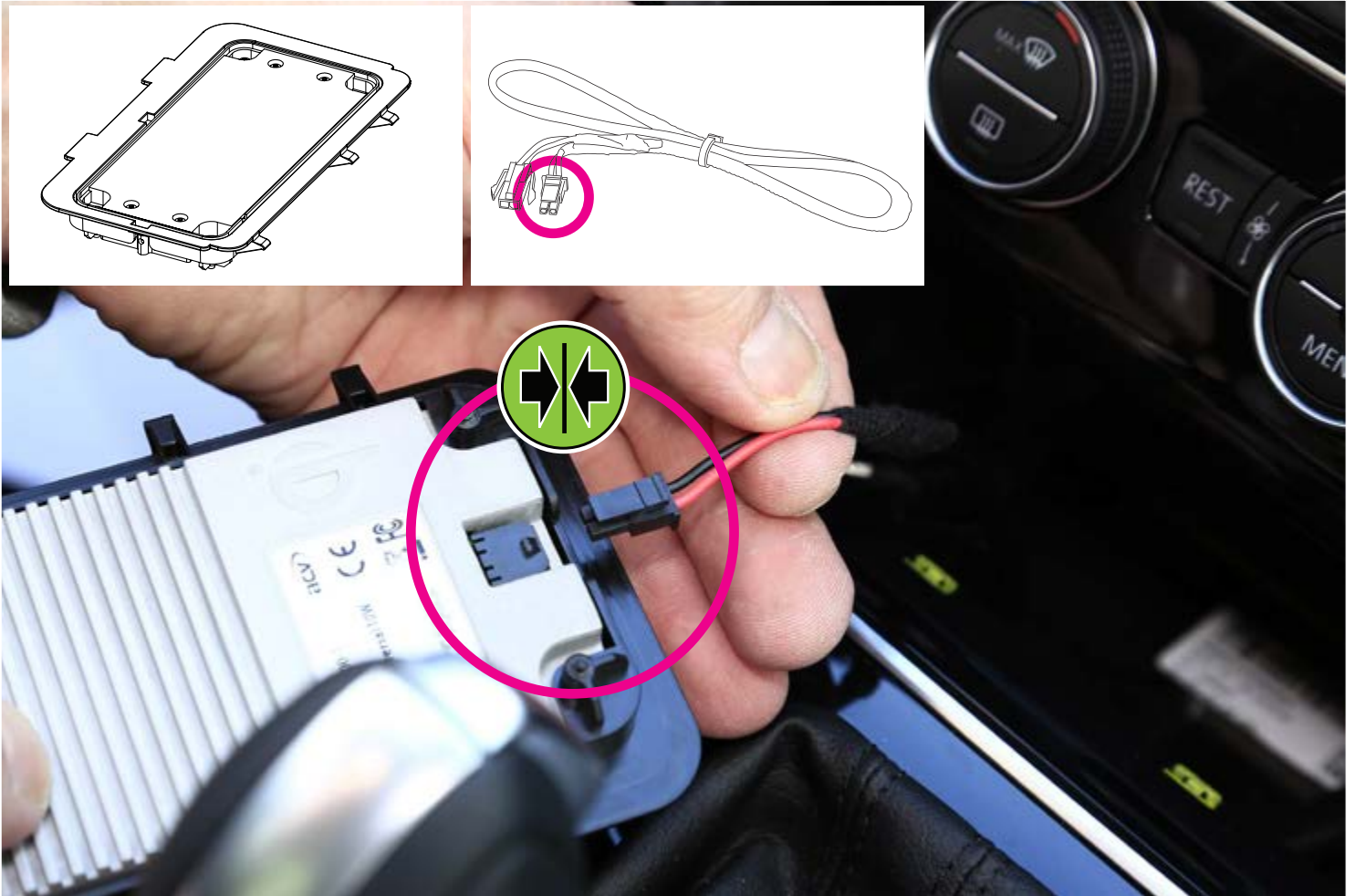




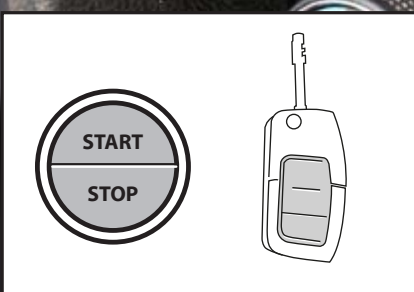












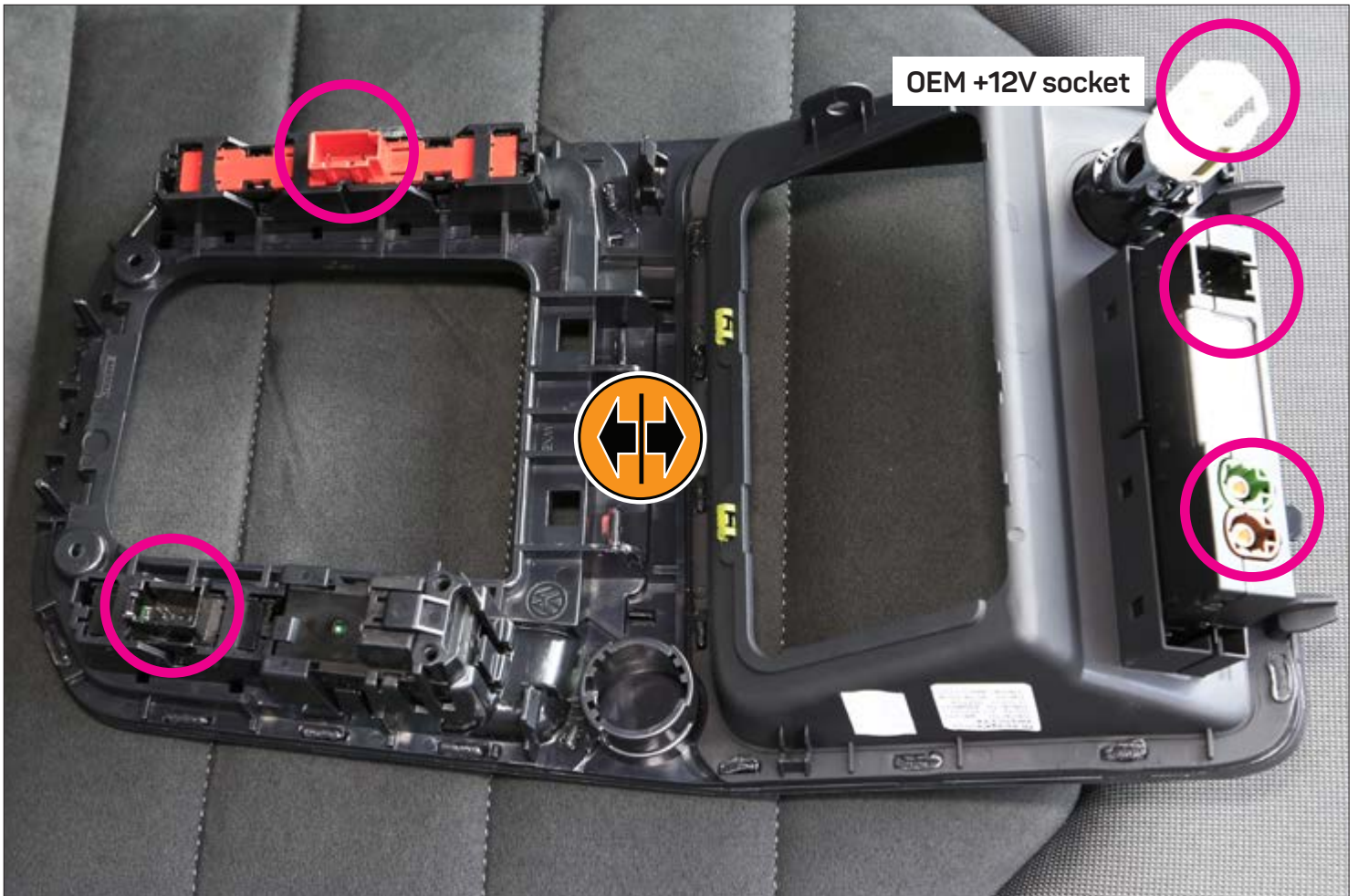
VW Golf Sportsvan

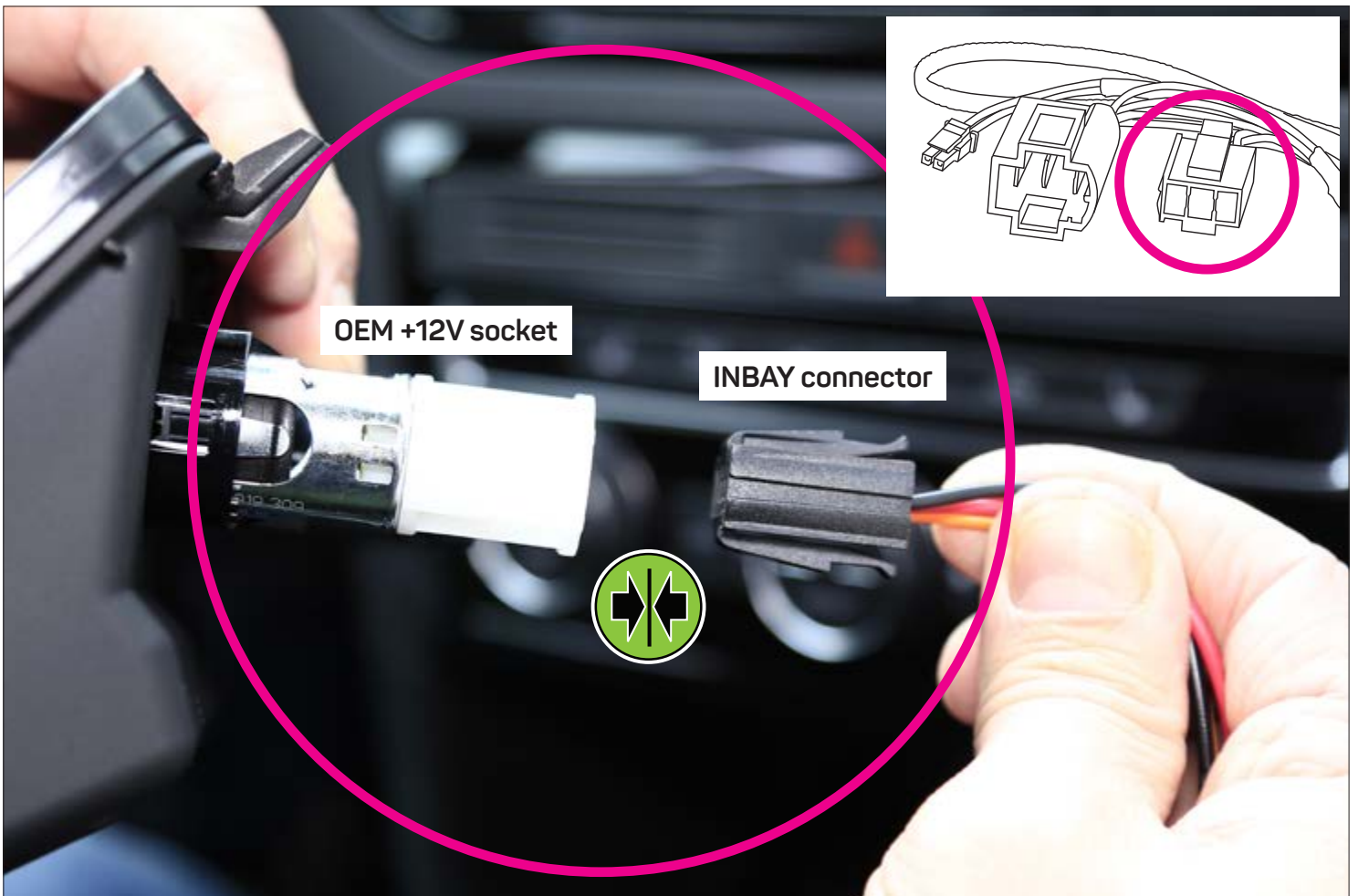
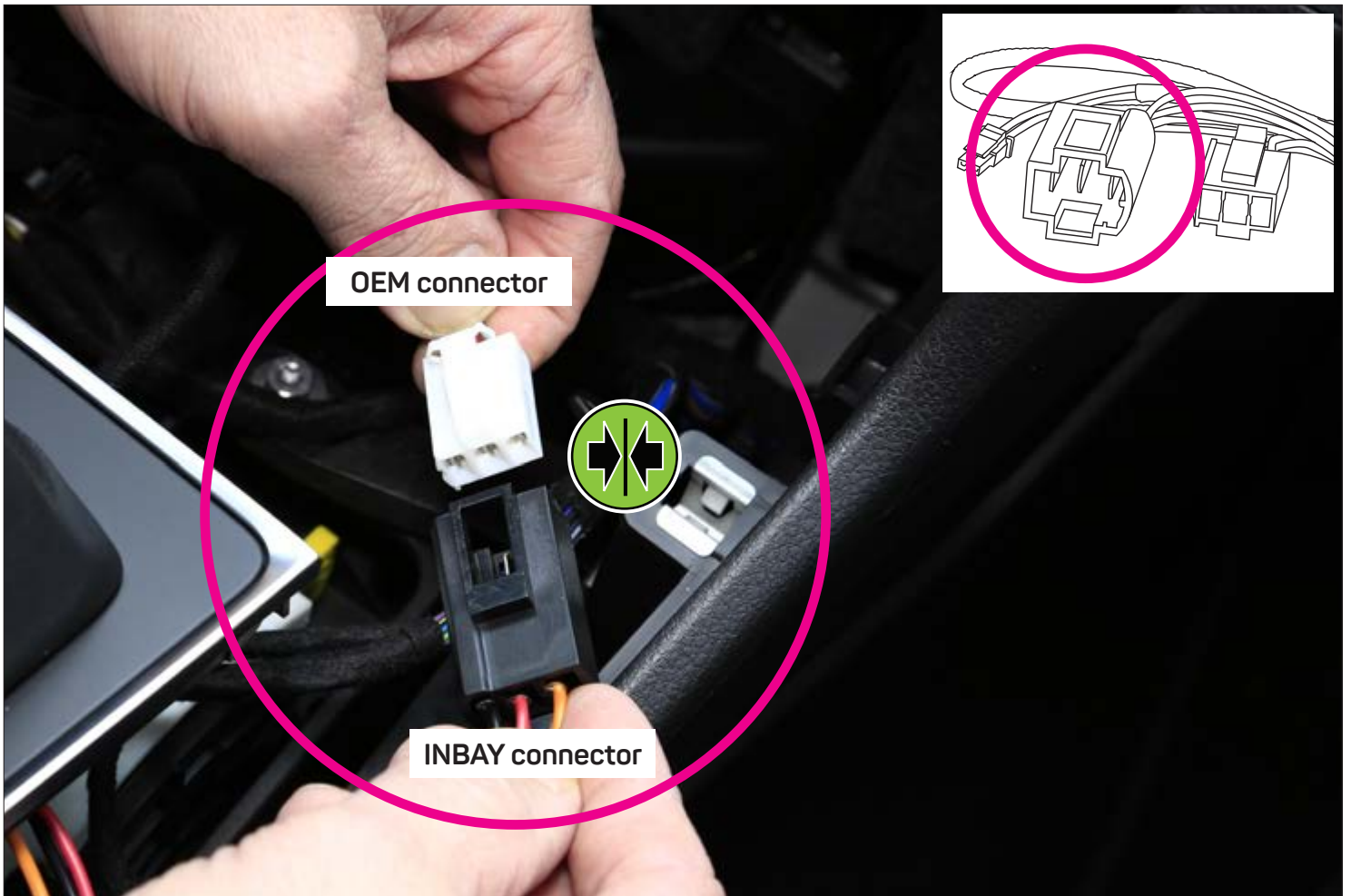


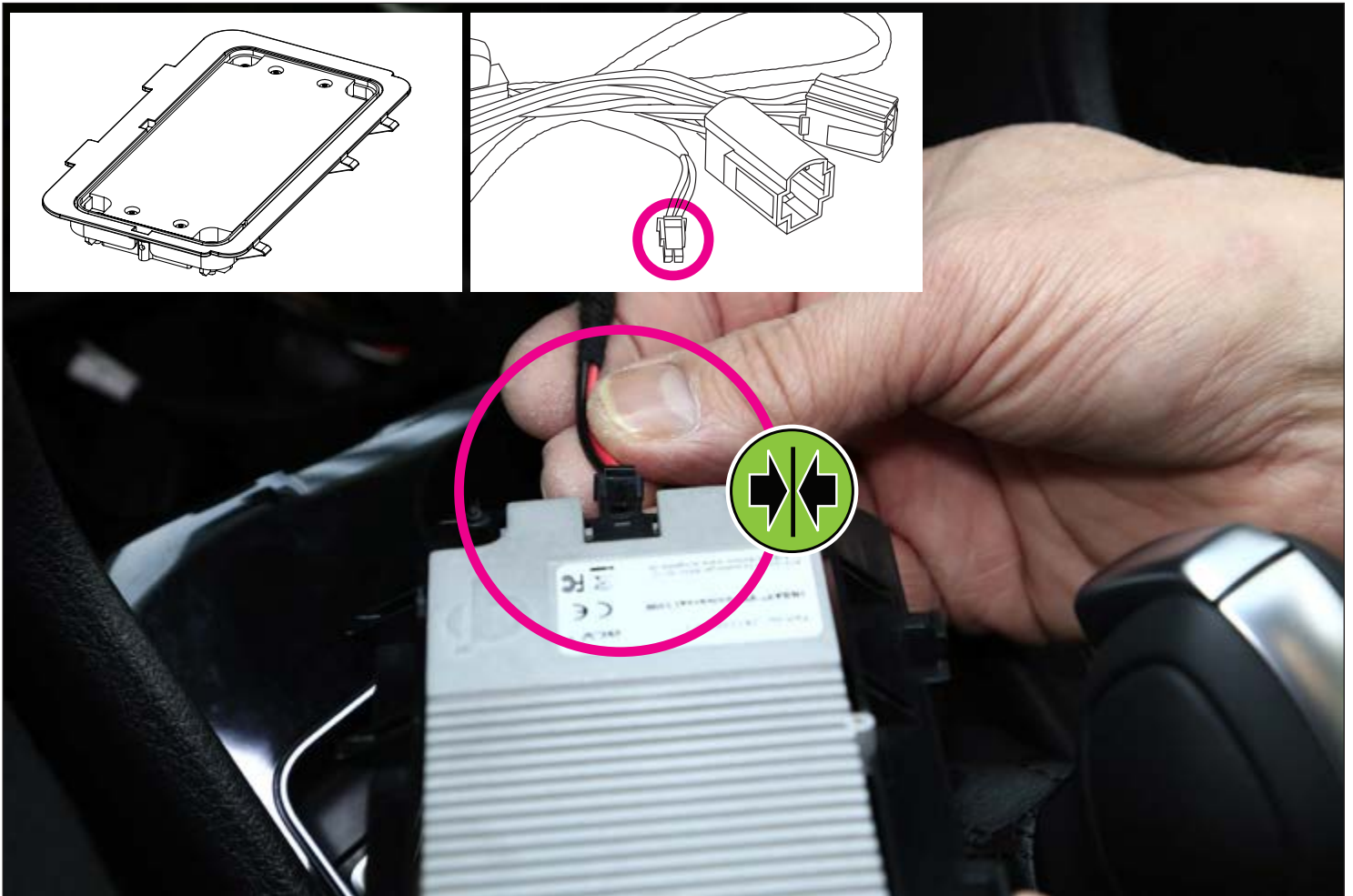


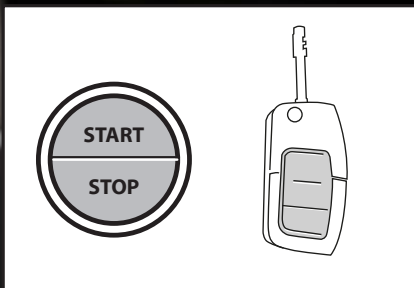




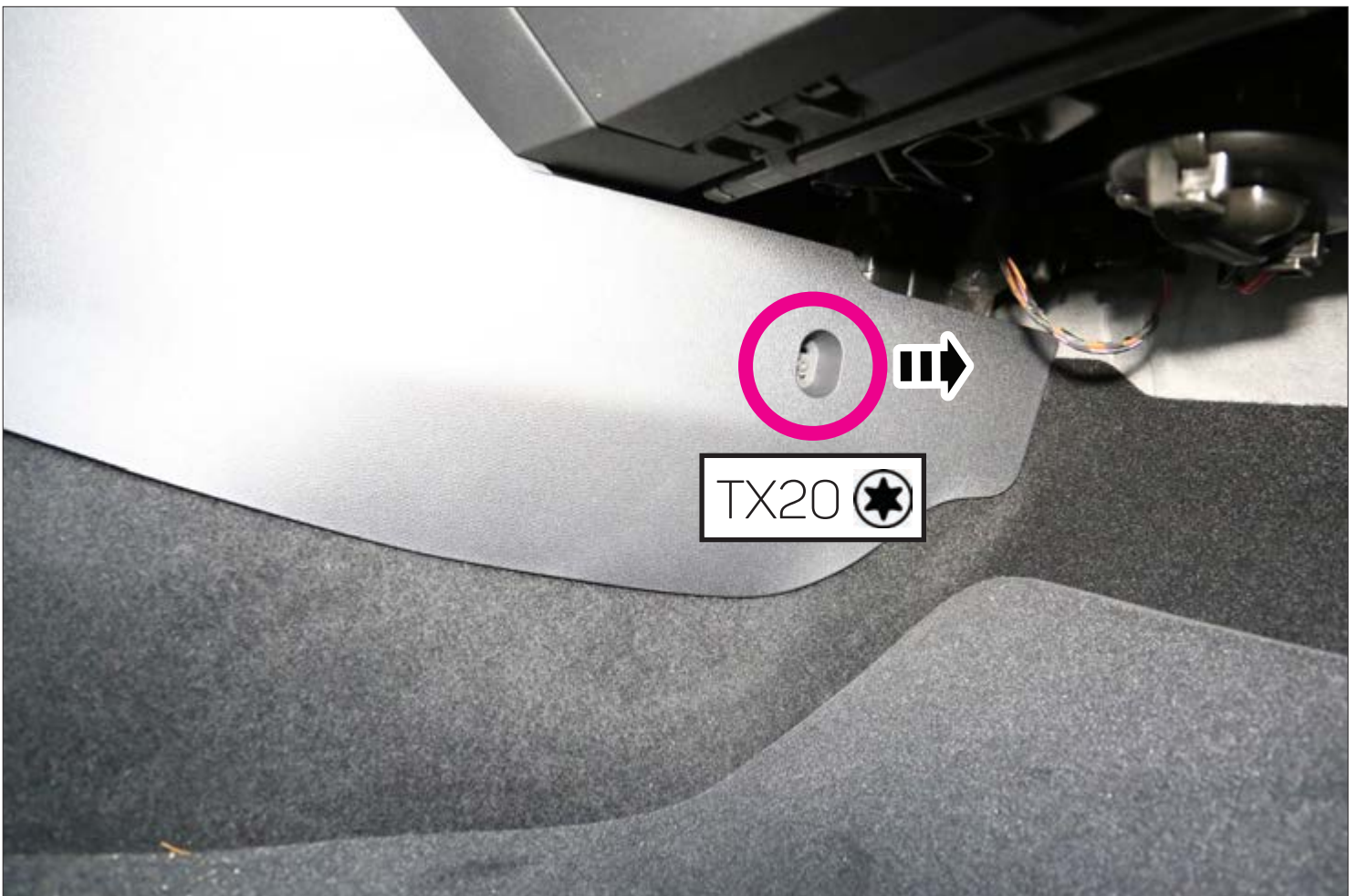






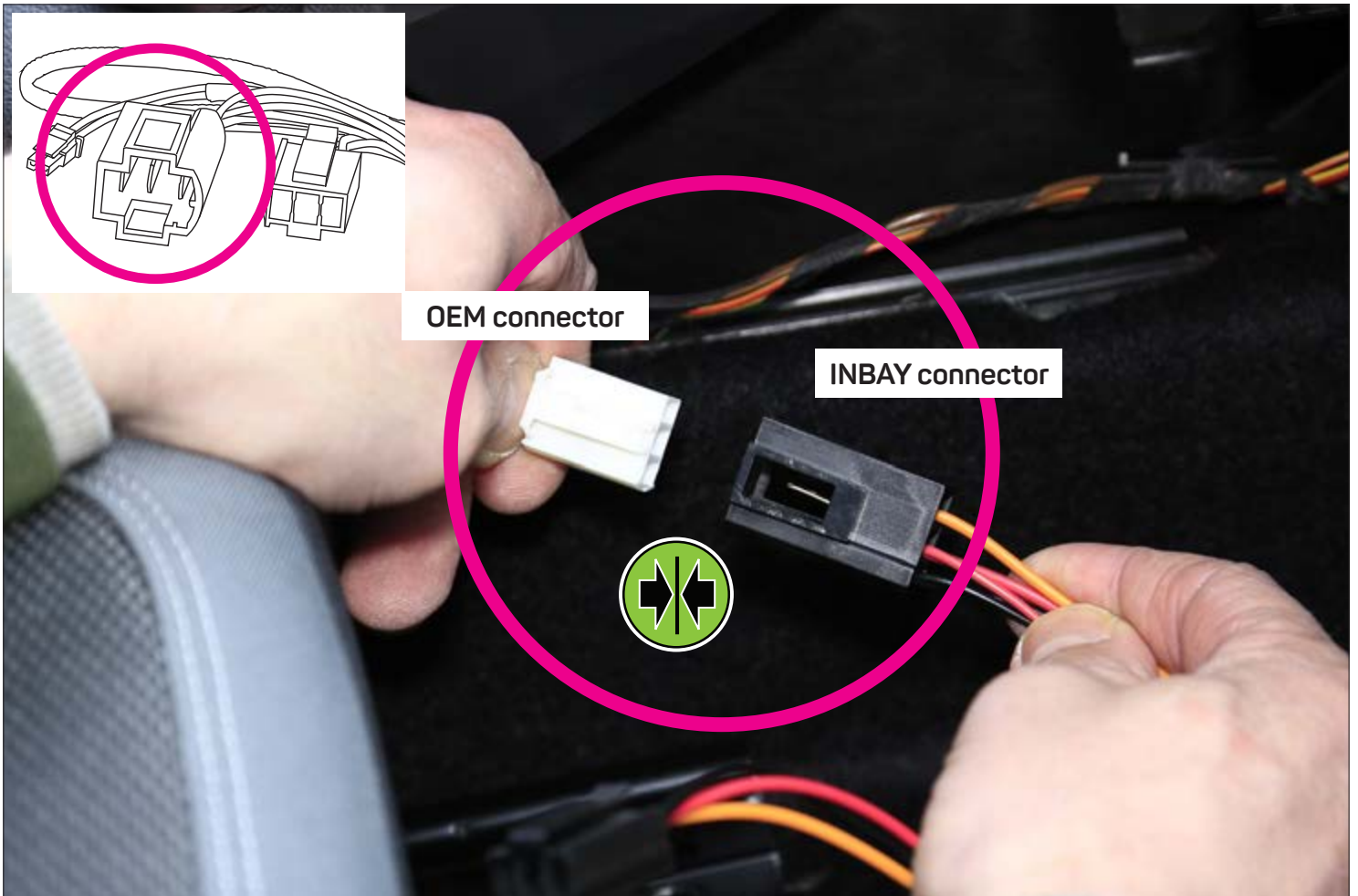
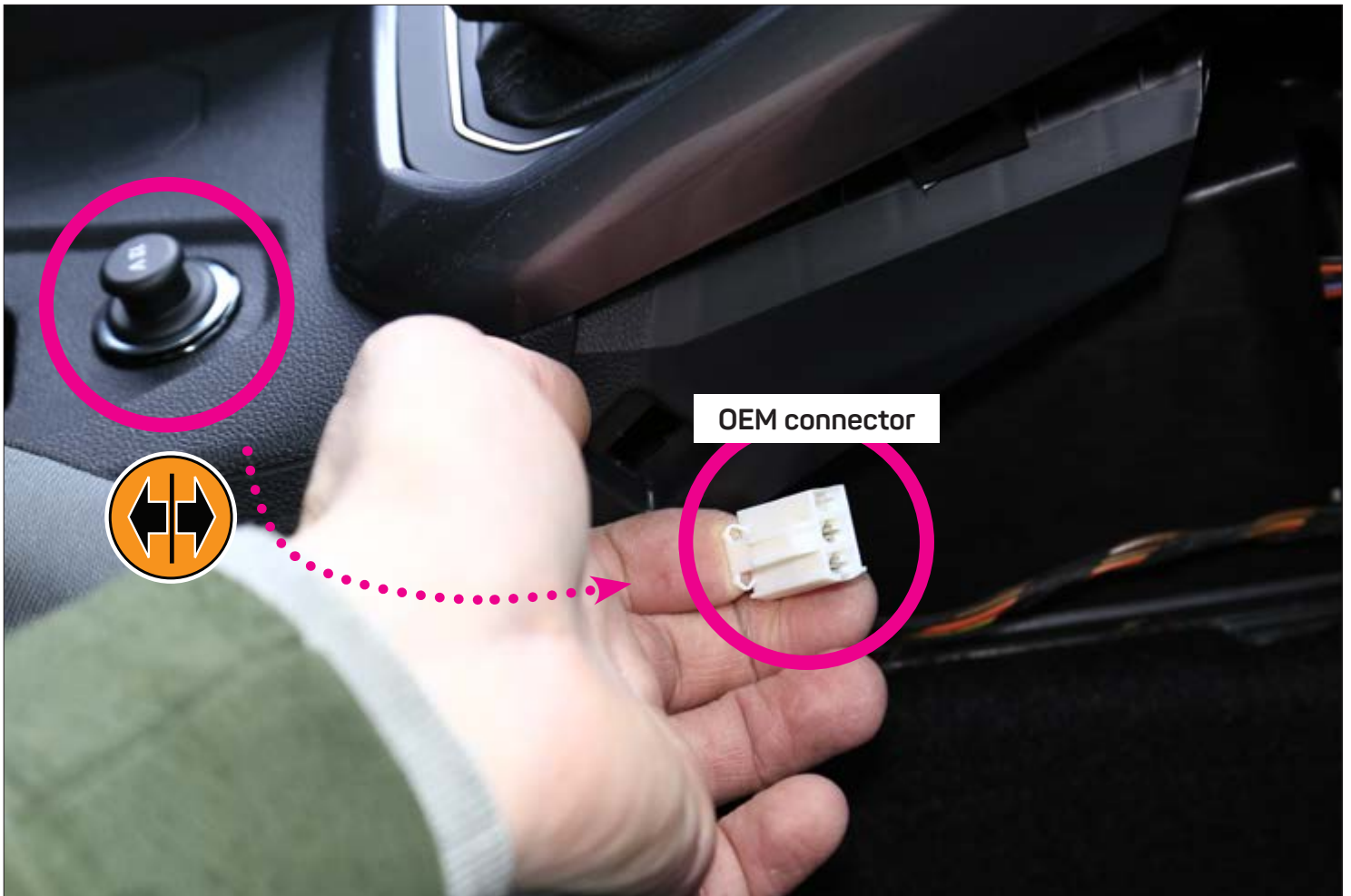


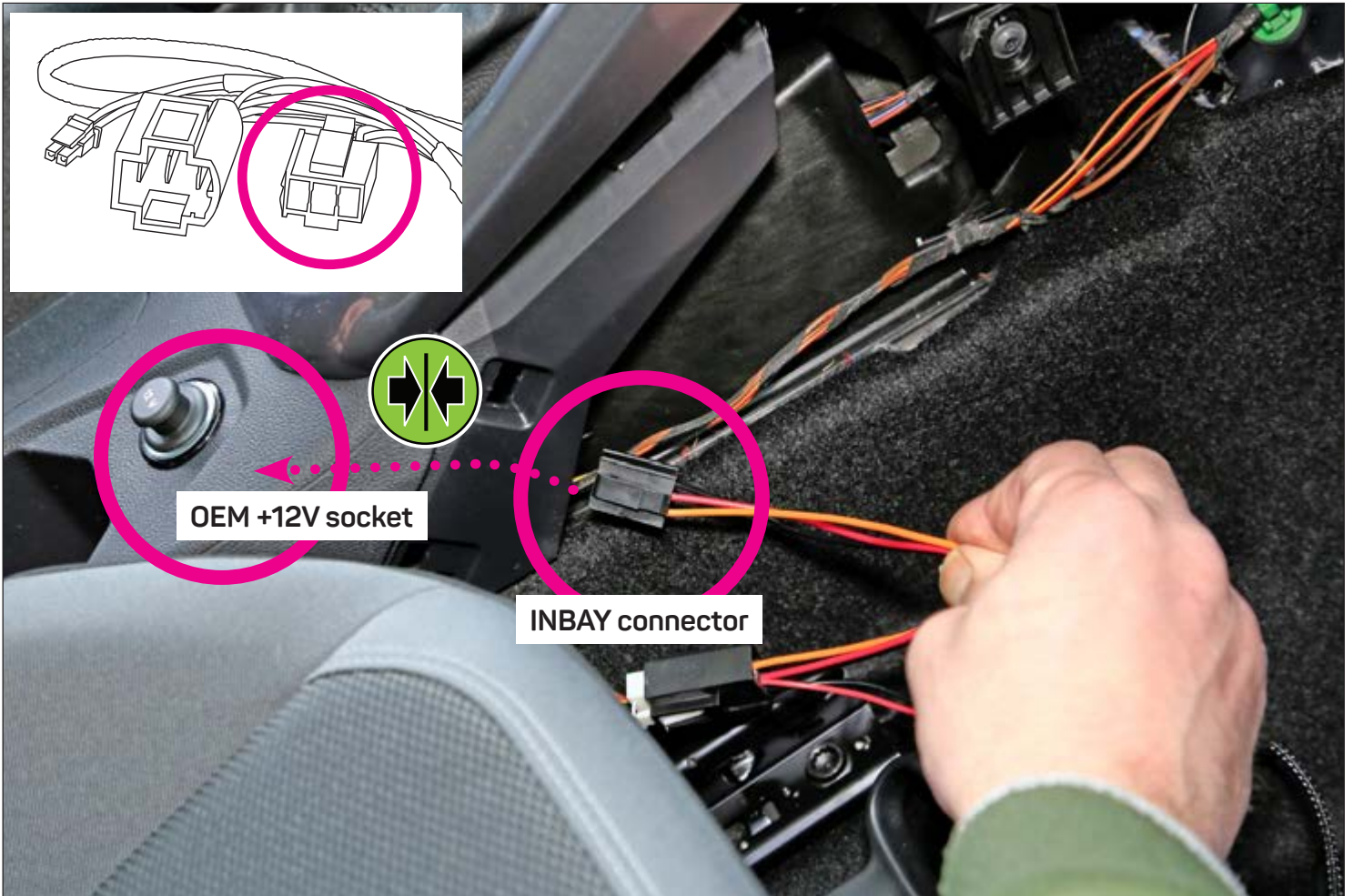
VW Polo



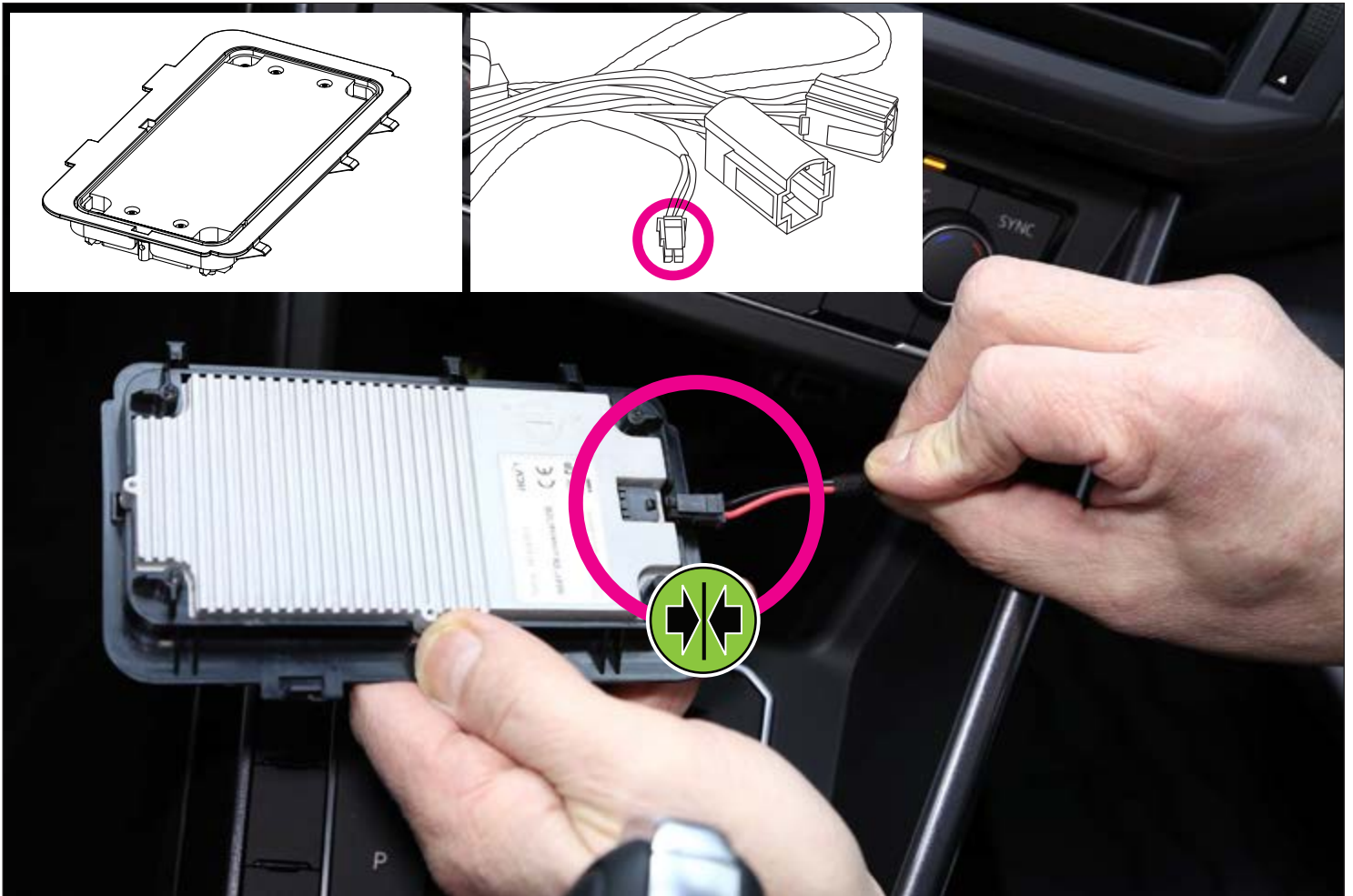










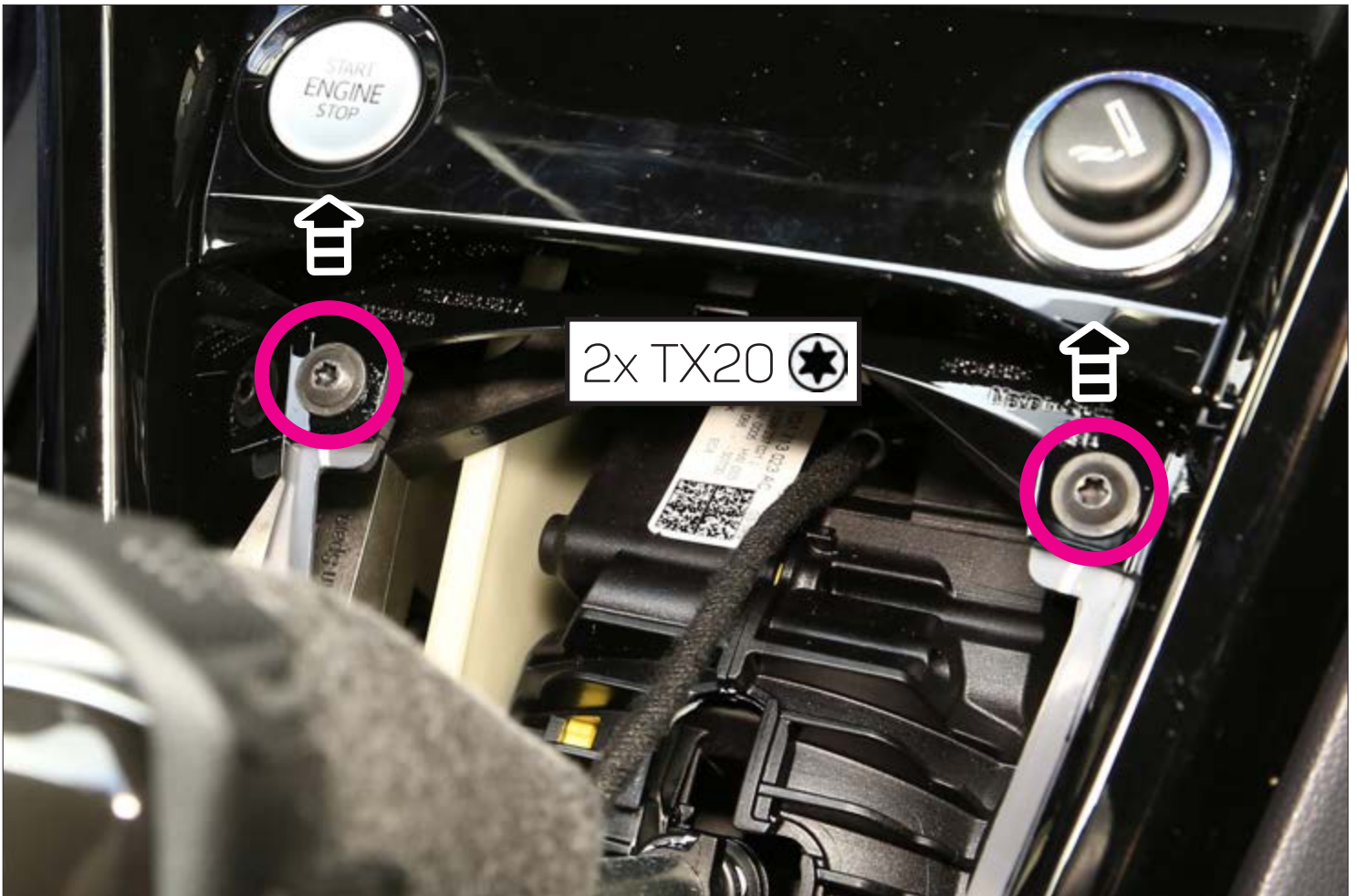




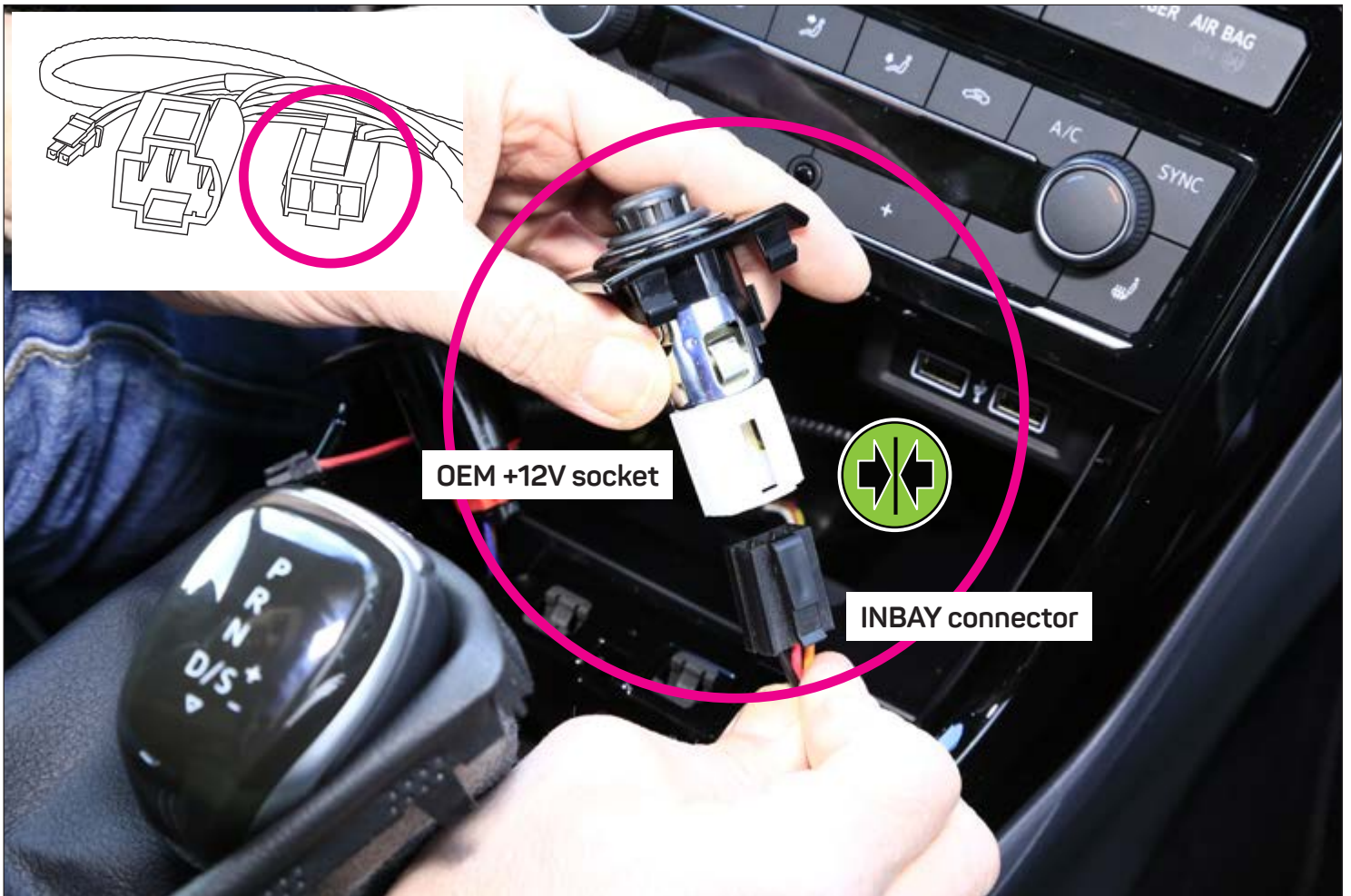
VW T-Cross

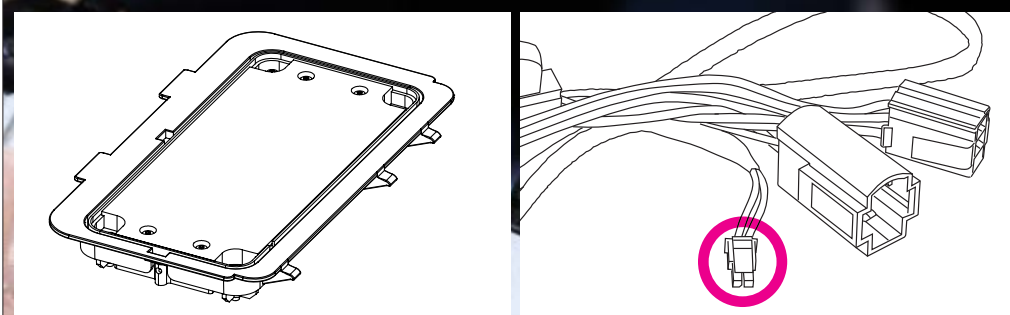




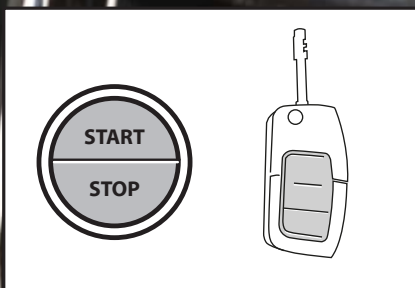




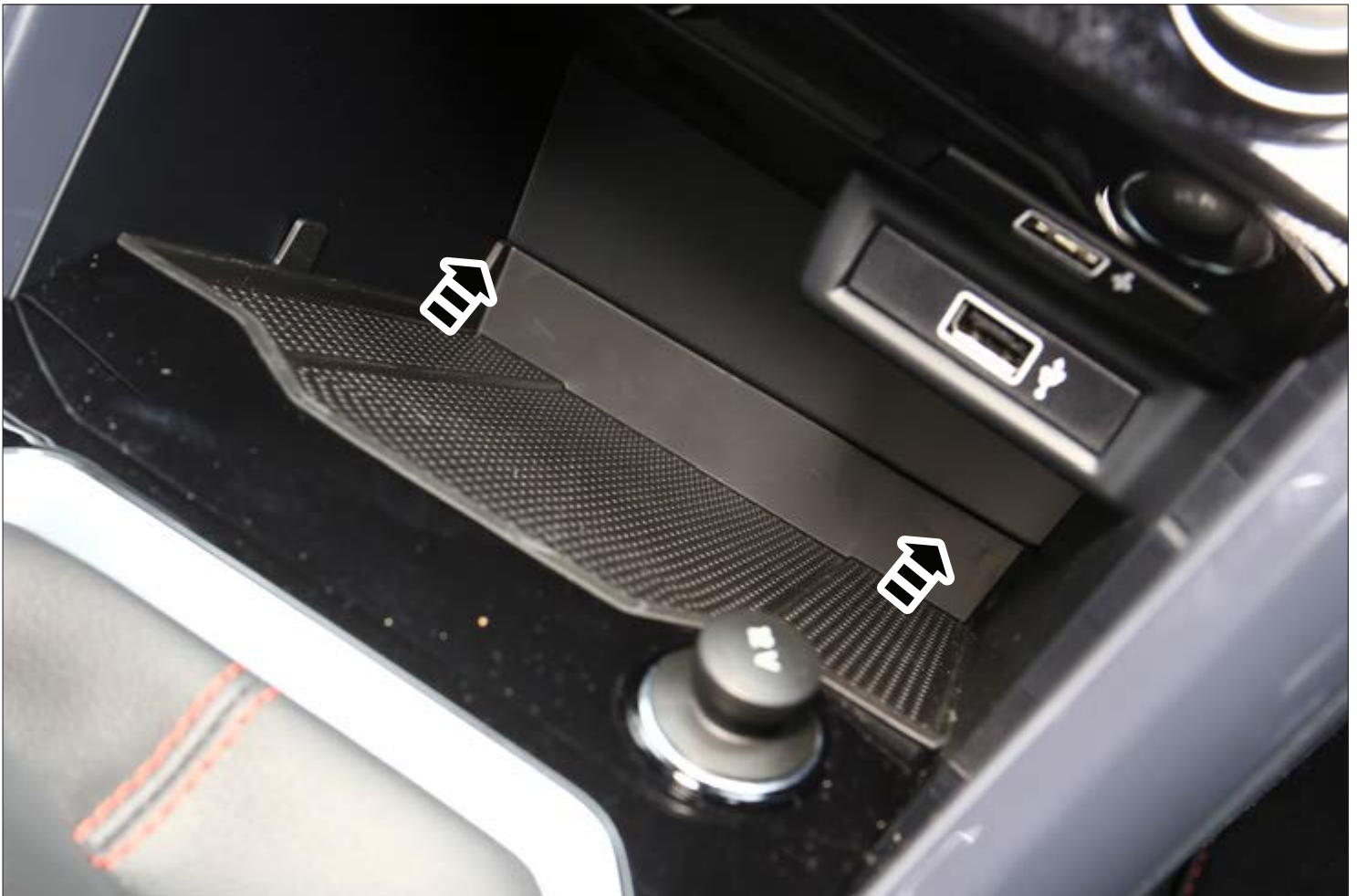






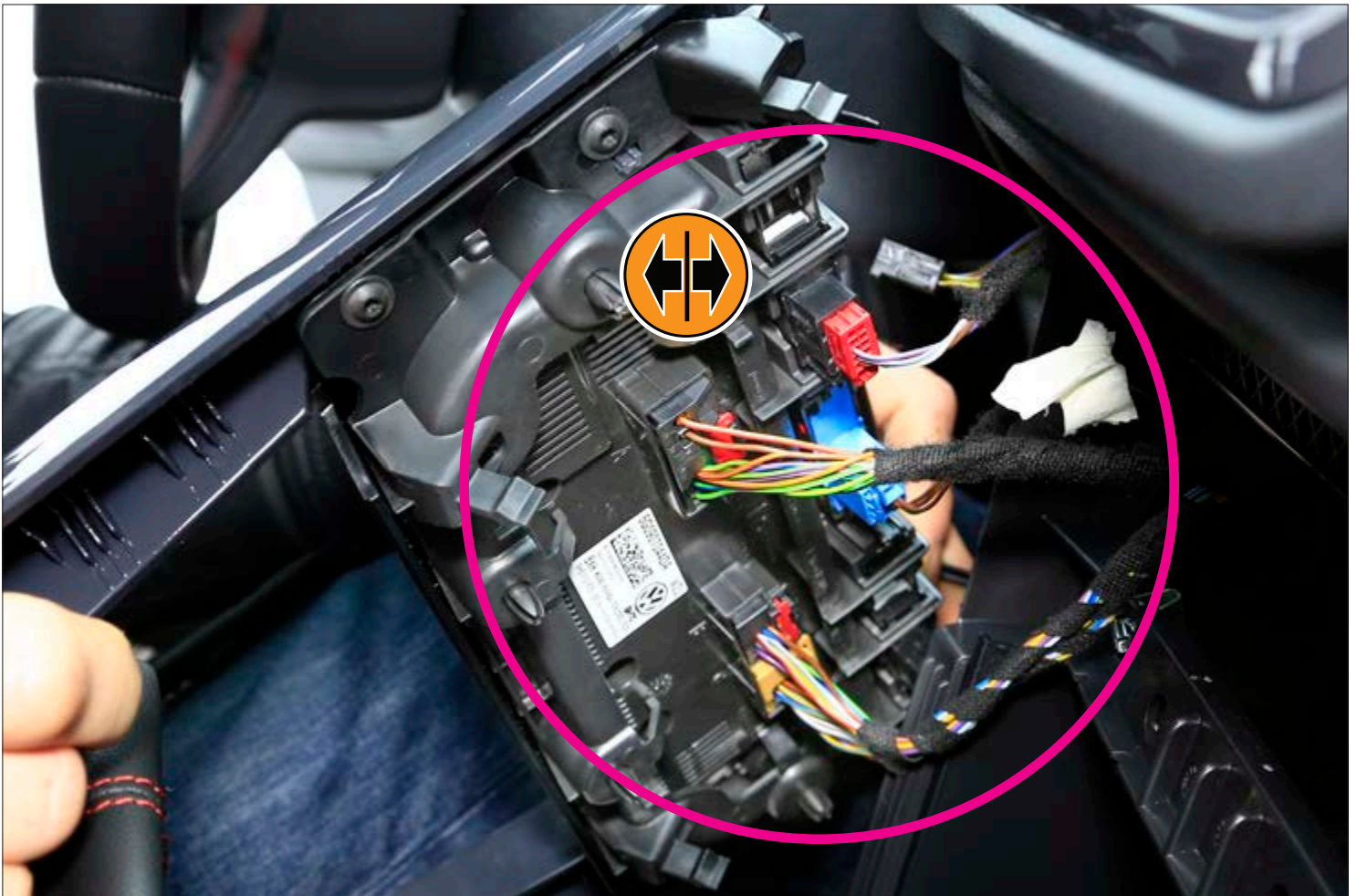


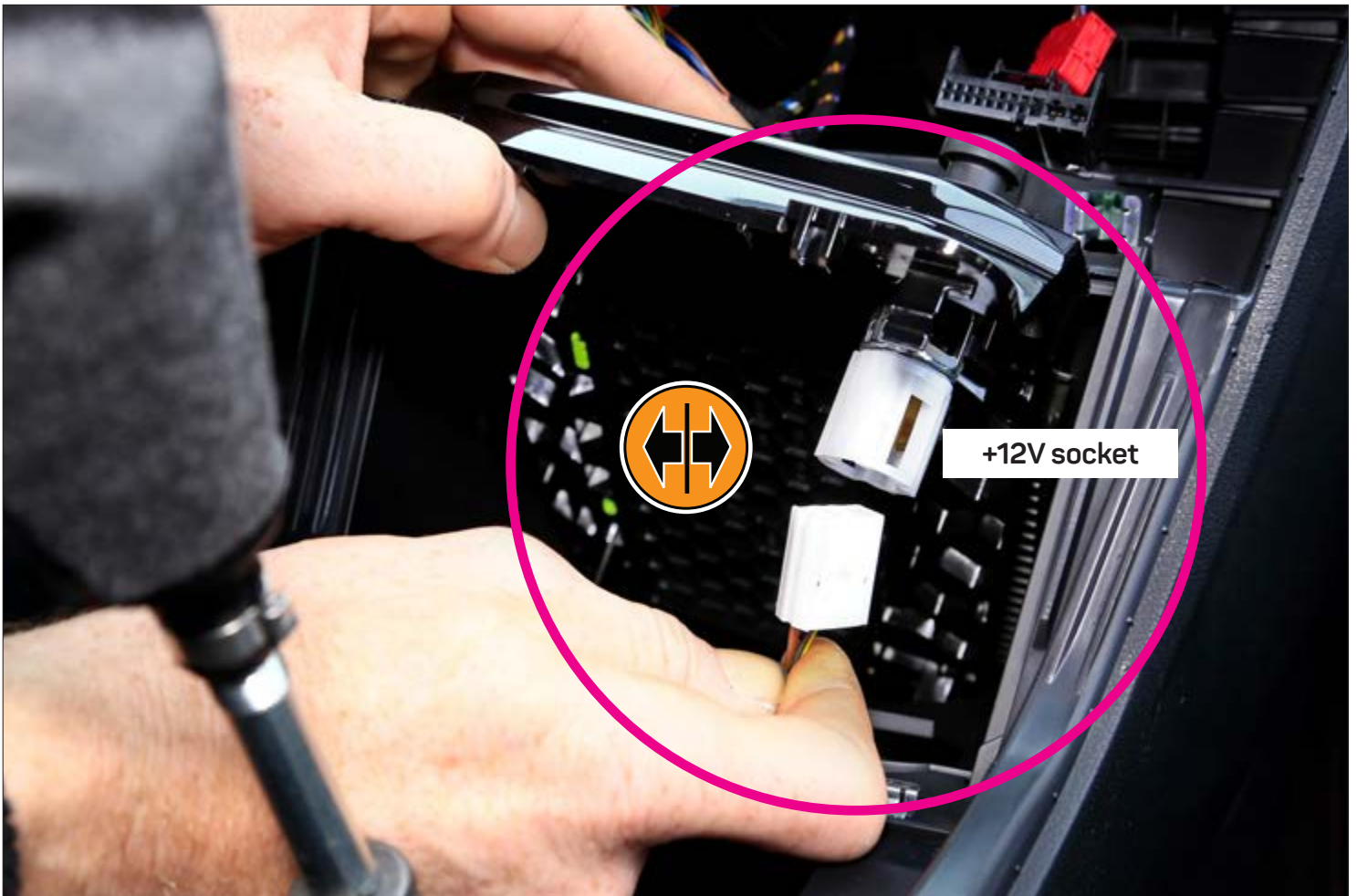
VW T-Roc / T-Roc Cabriolet

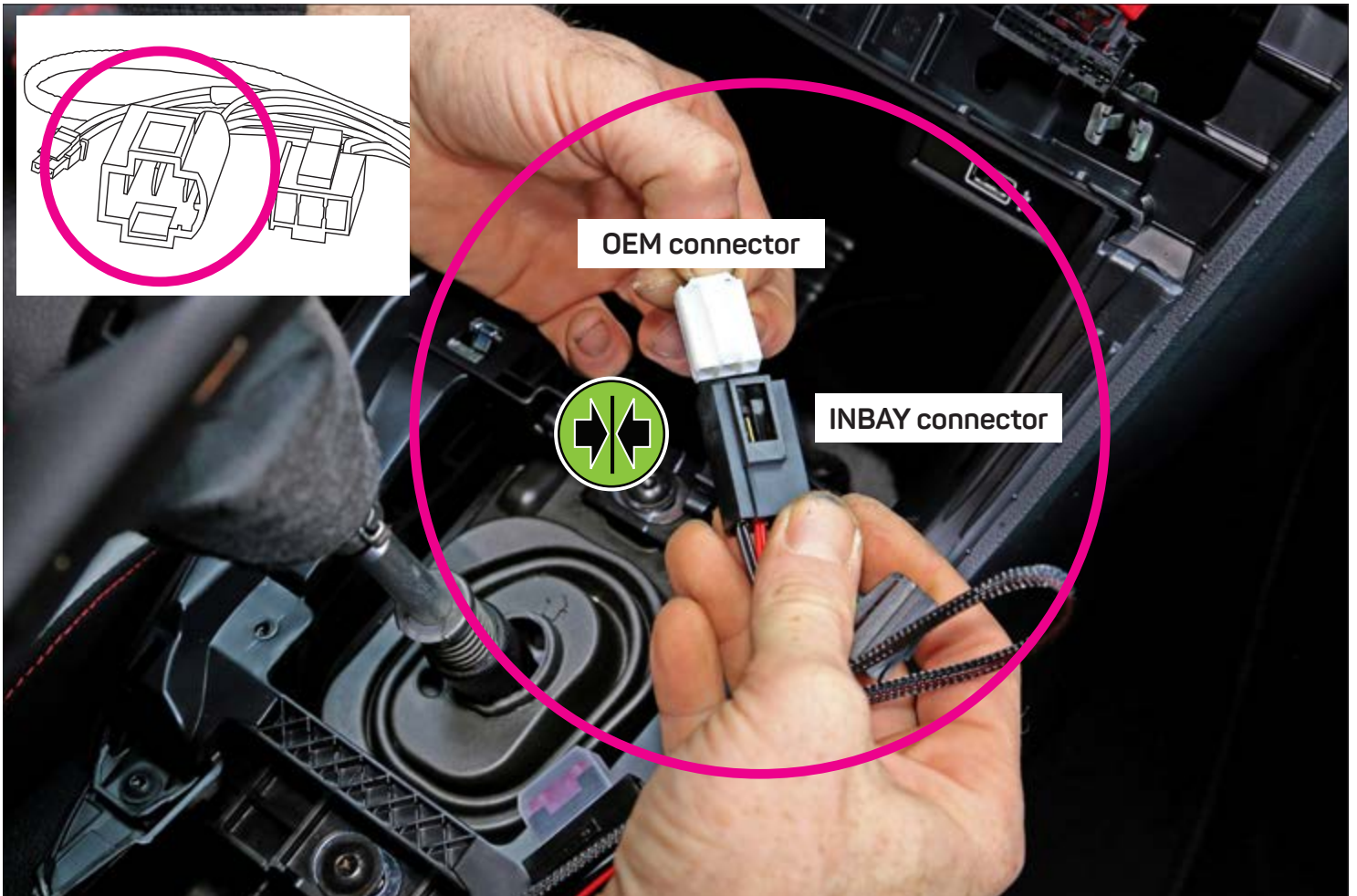


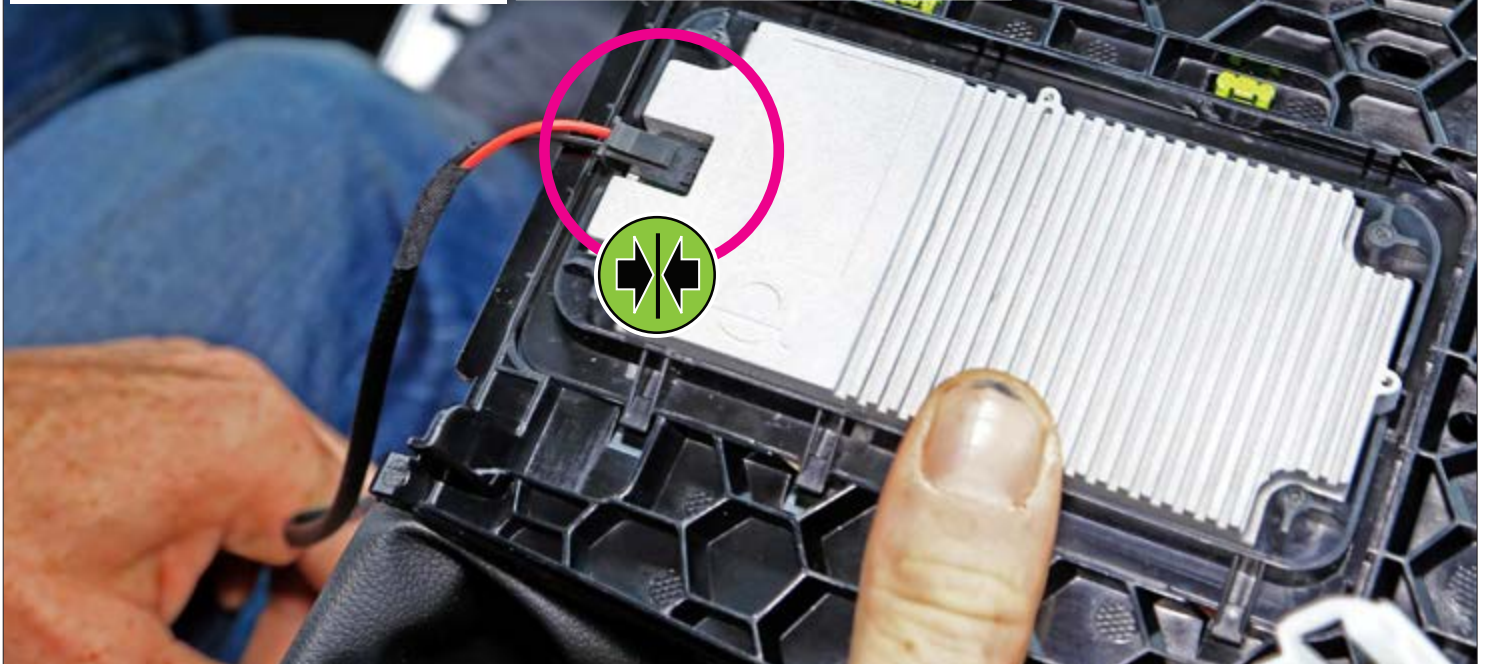
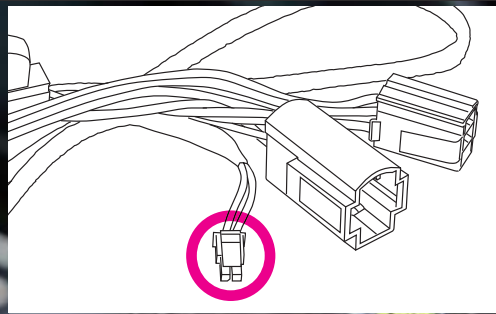
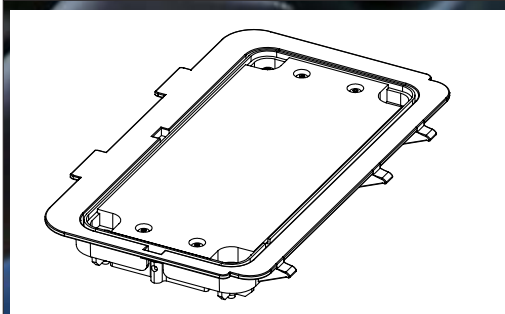


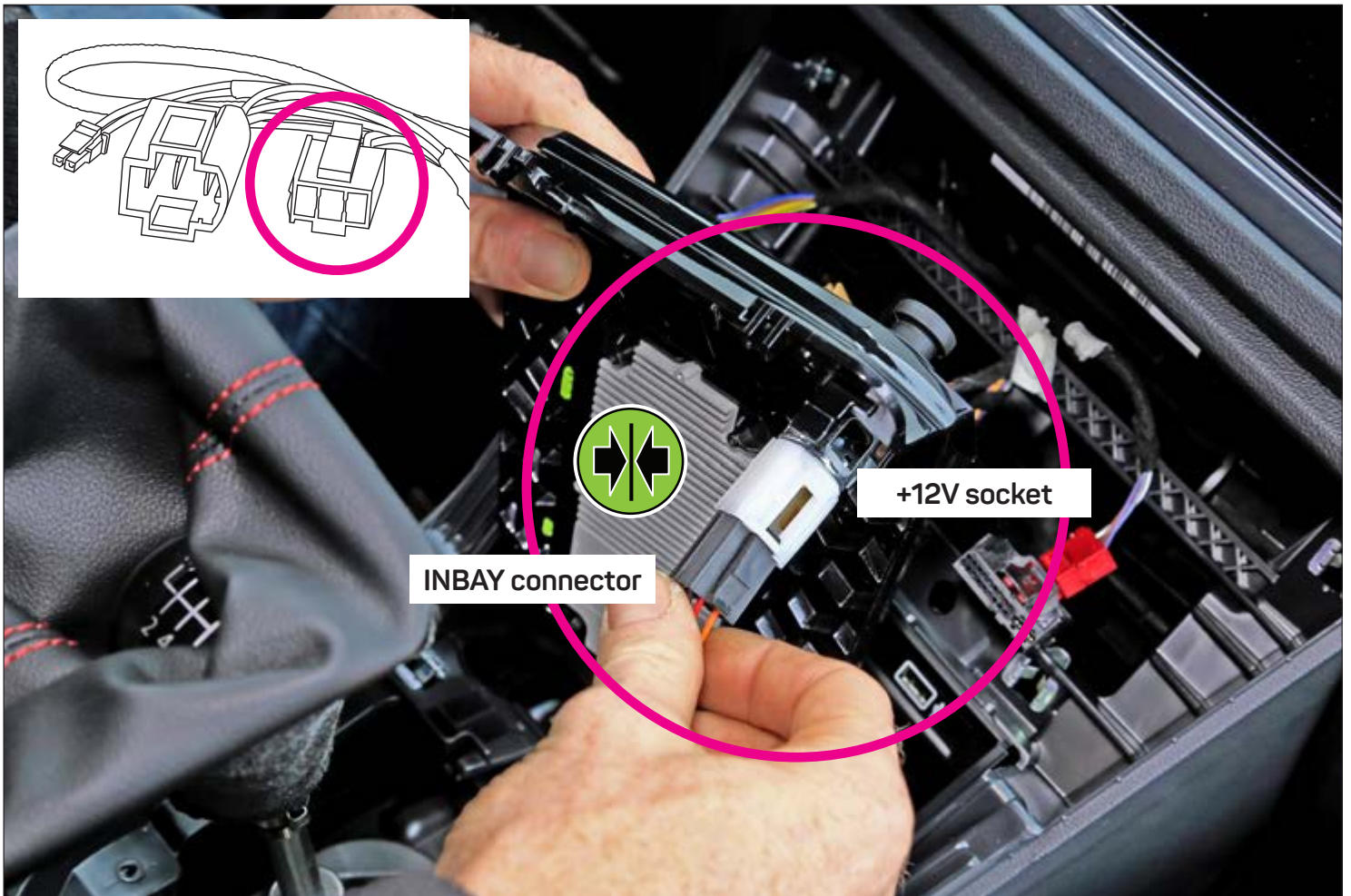




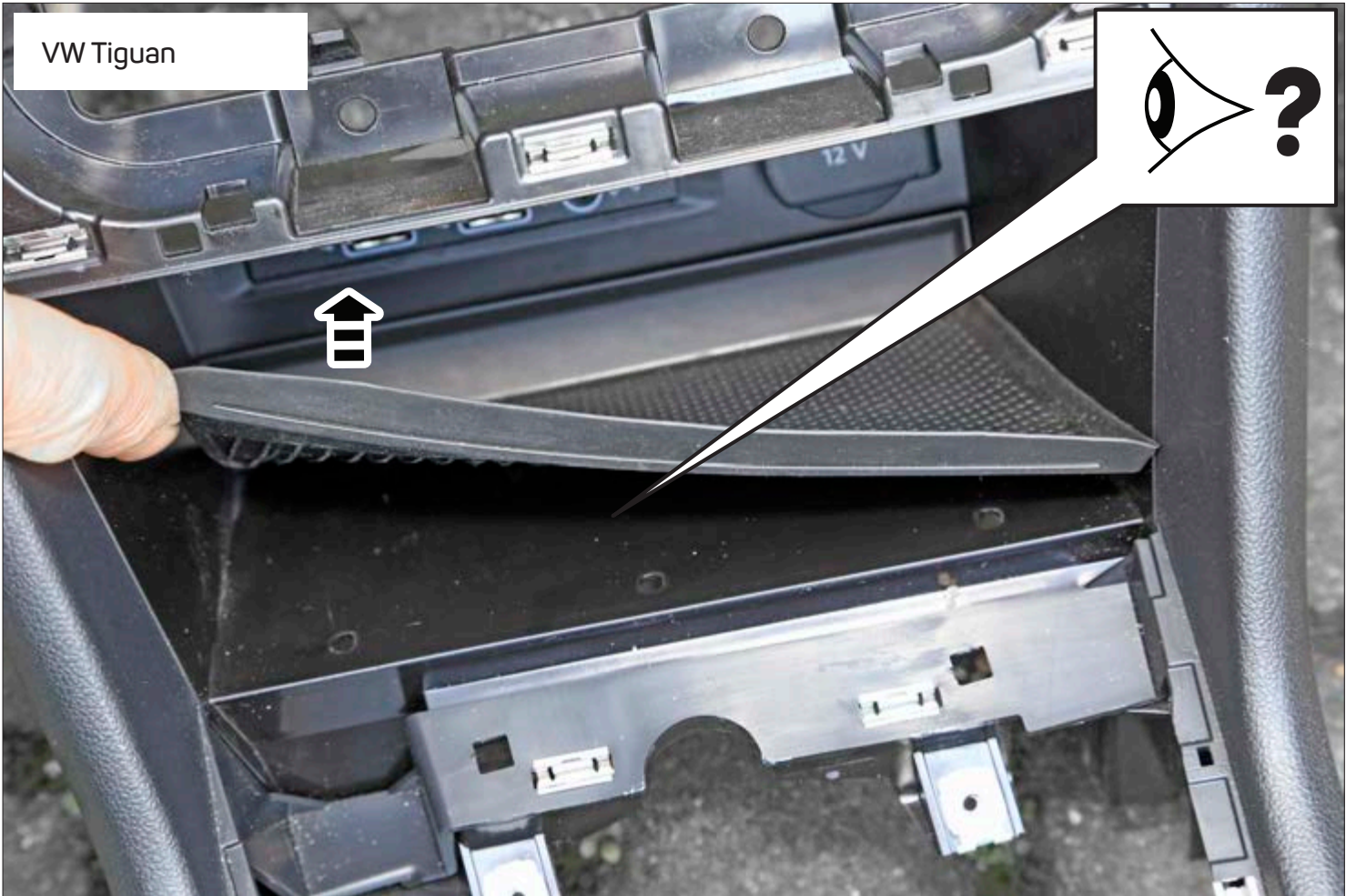




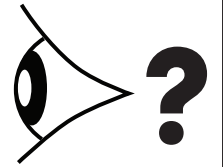








VW Tiguan



Modelle mit Blinddeckel:
weiter auf Seite 67

Models with blind cover:
proceed on page 67



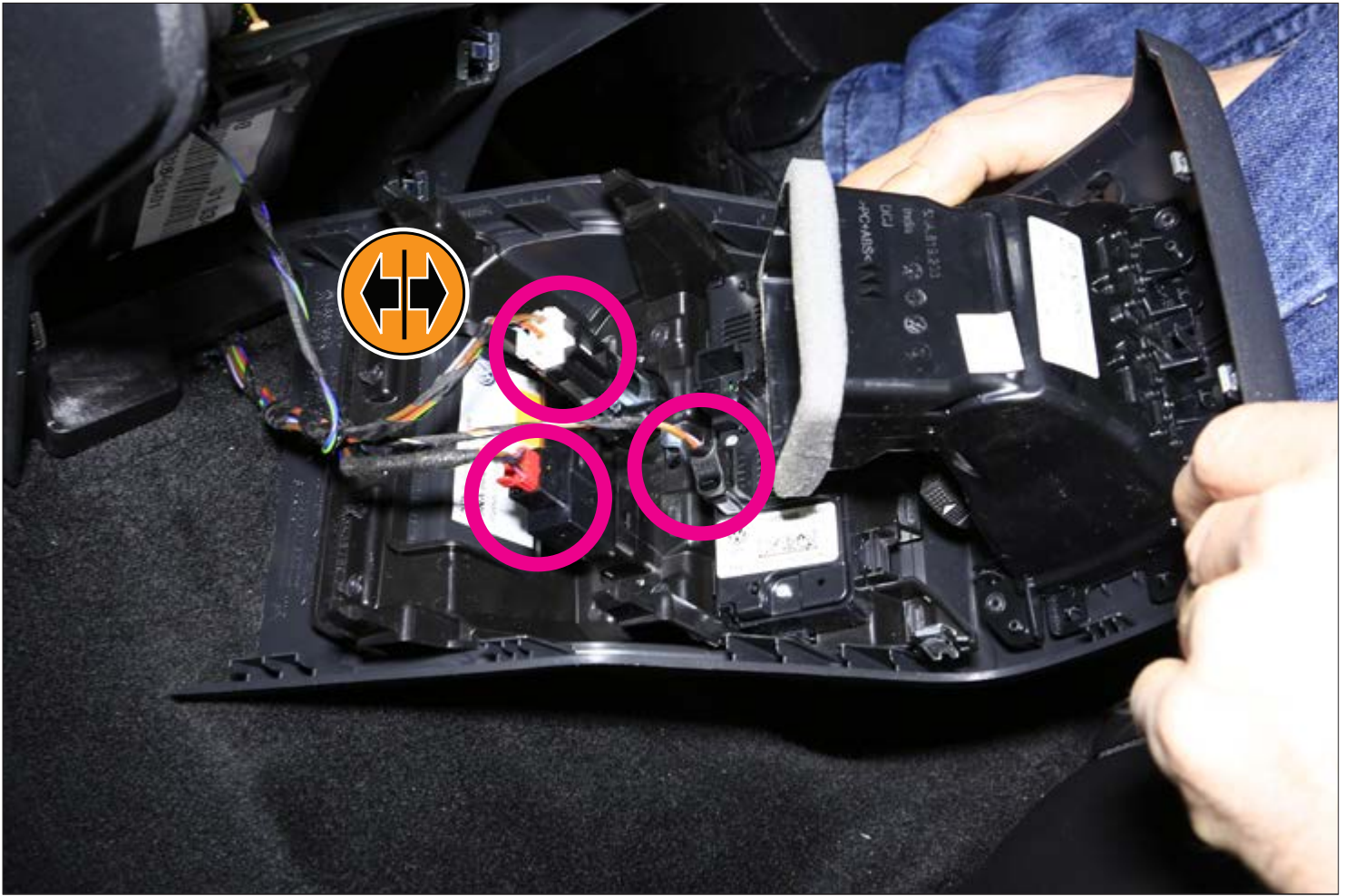


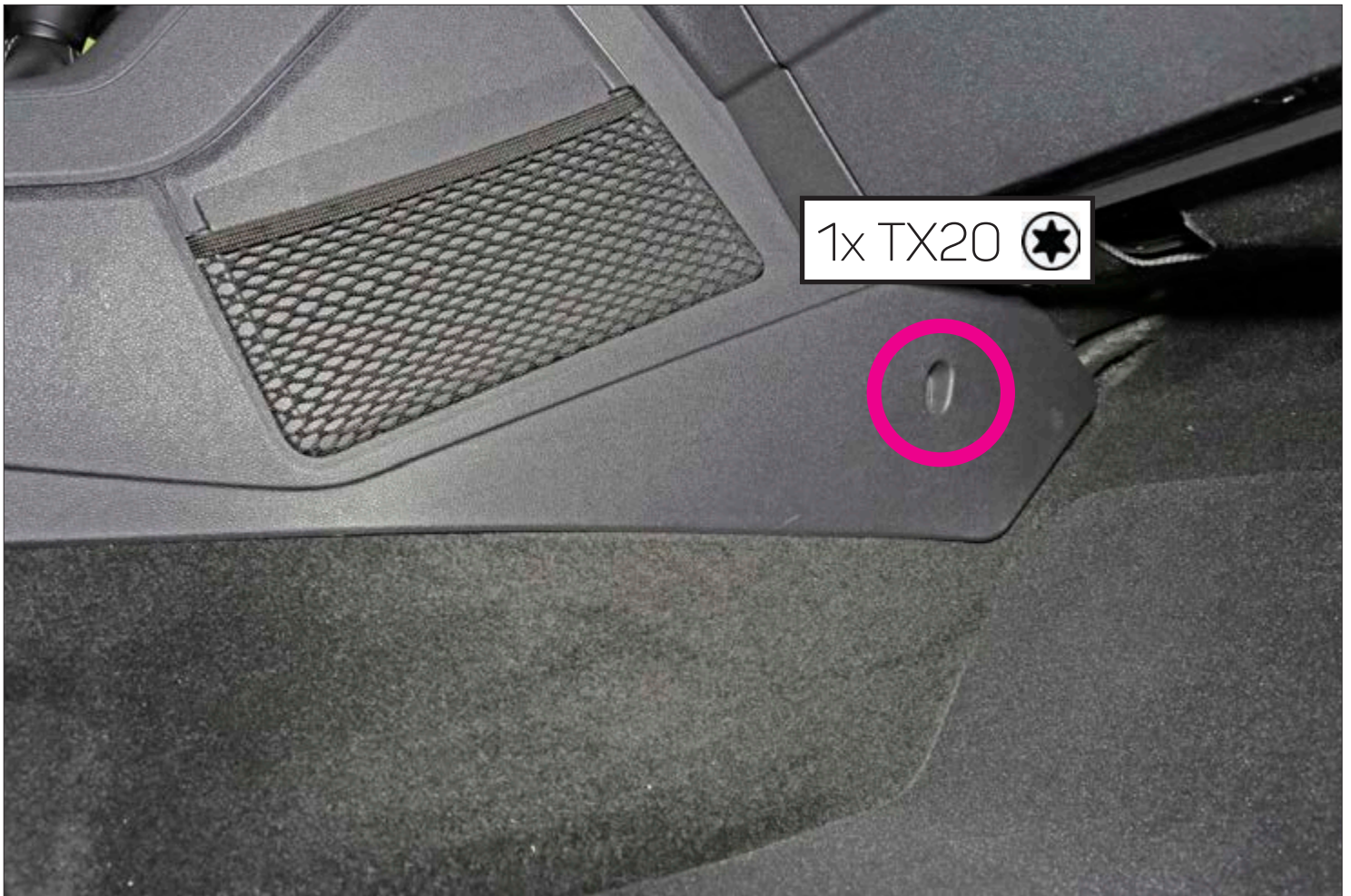
Beispiel / sample: 5NB 863 241 F 82V

Eine neue Original-Mittelkonsole (VW-Teile Nr.: 5NB 863 241 F ***) mit Ausparung für das Subsystem wird benötigt. Bitte überprüfen Sie vor Bestellung die Farbe Ihrer Innenausstattung anhand der Fahrgestellnummer.

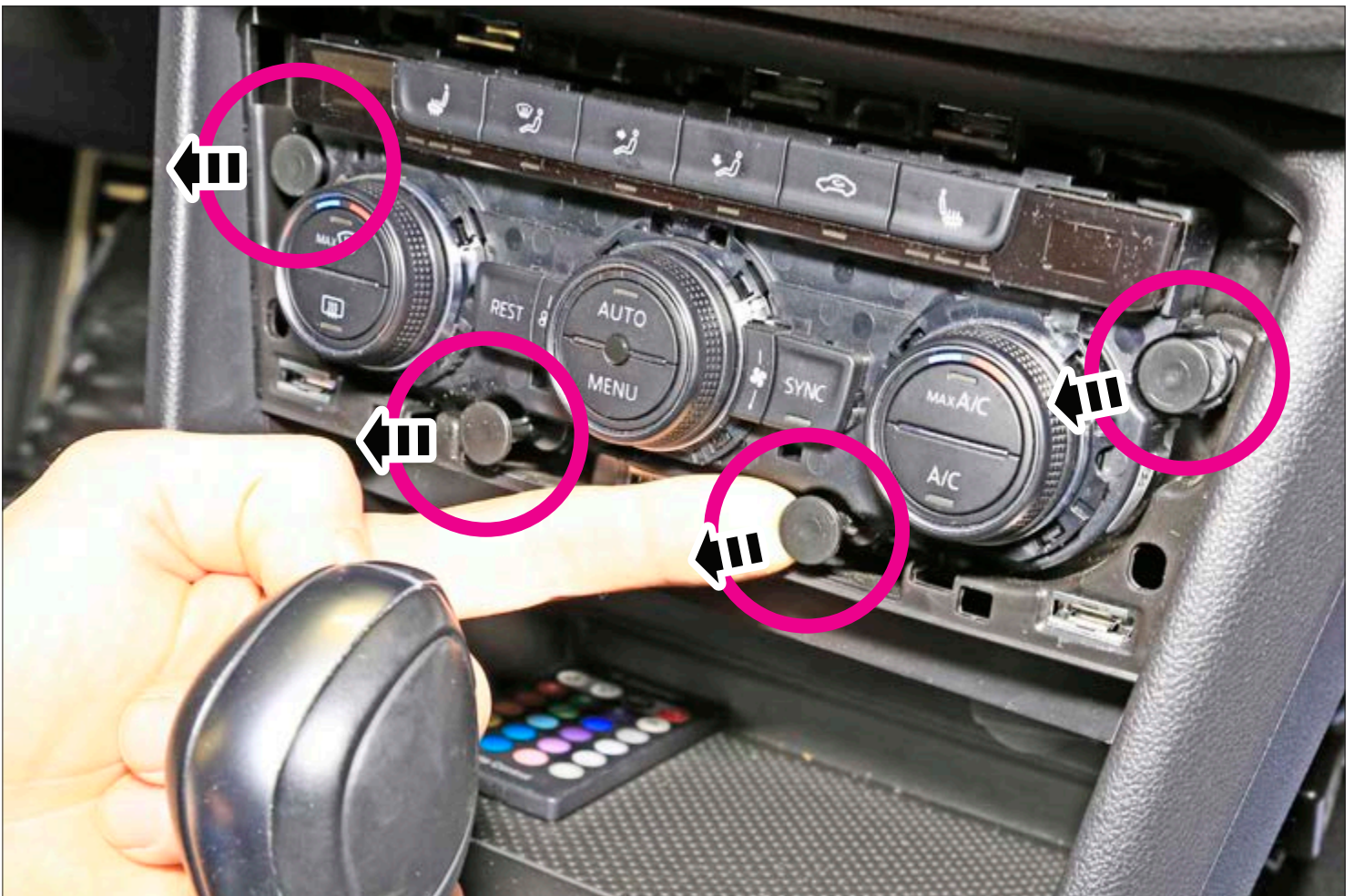
A new original panel (VW part no.: 5NB 863 241 F ***) with opening for the subsystem is required. Please check the colour on basis of the VIN (vehicle identification number) before ordering.

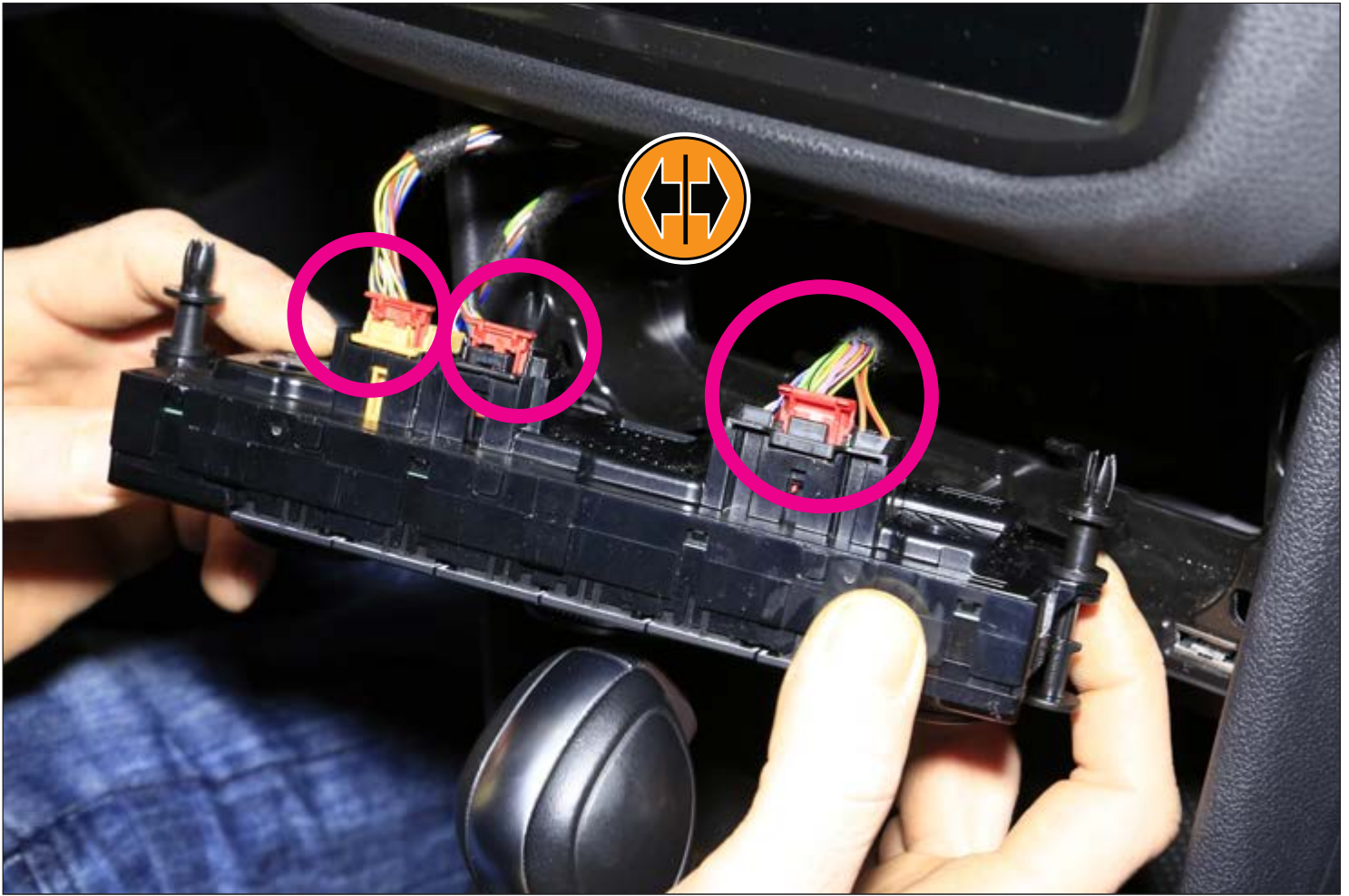


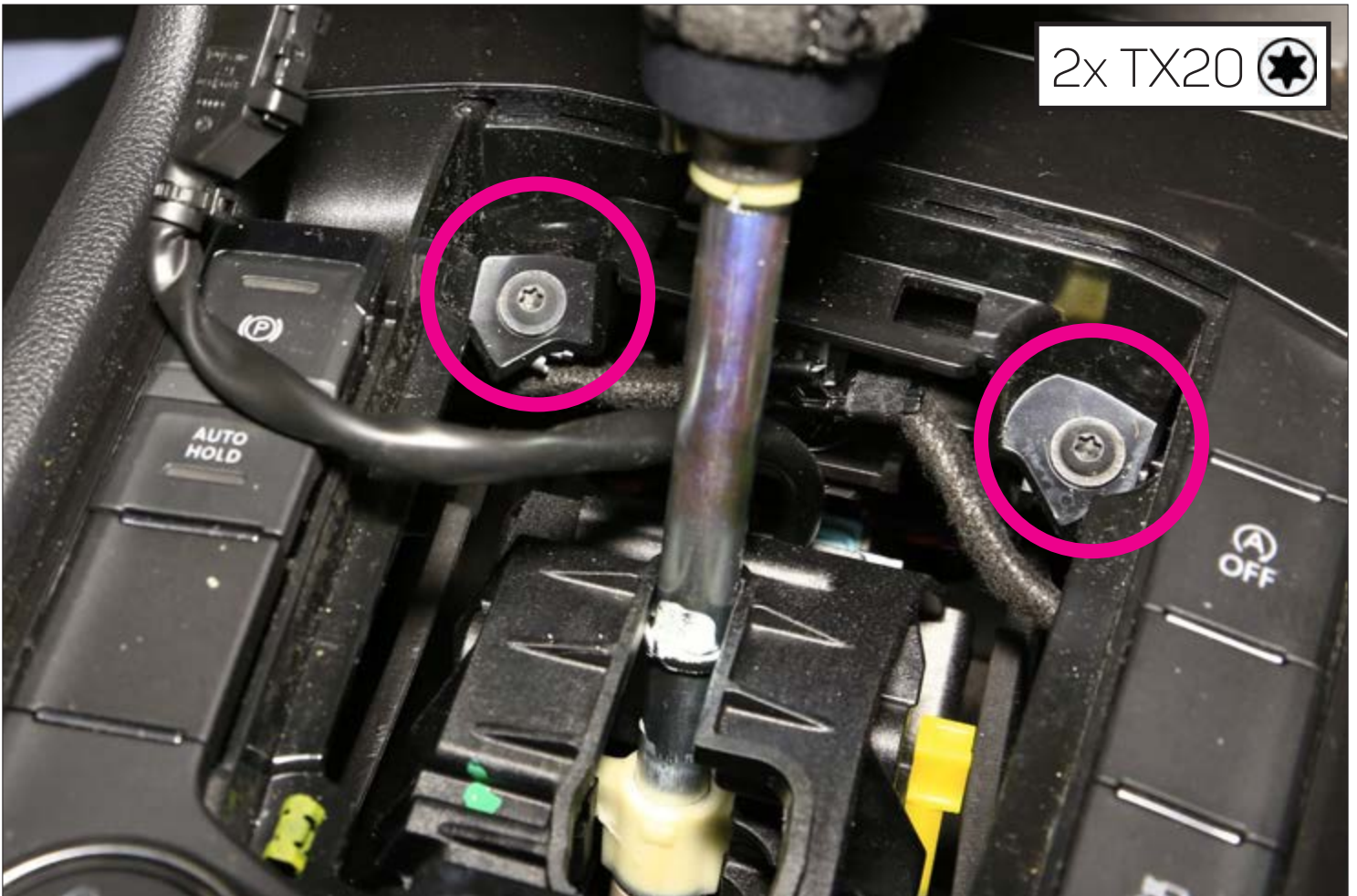
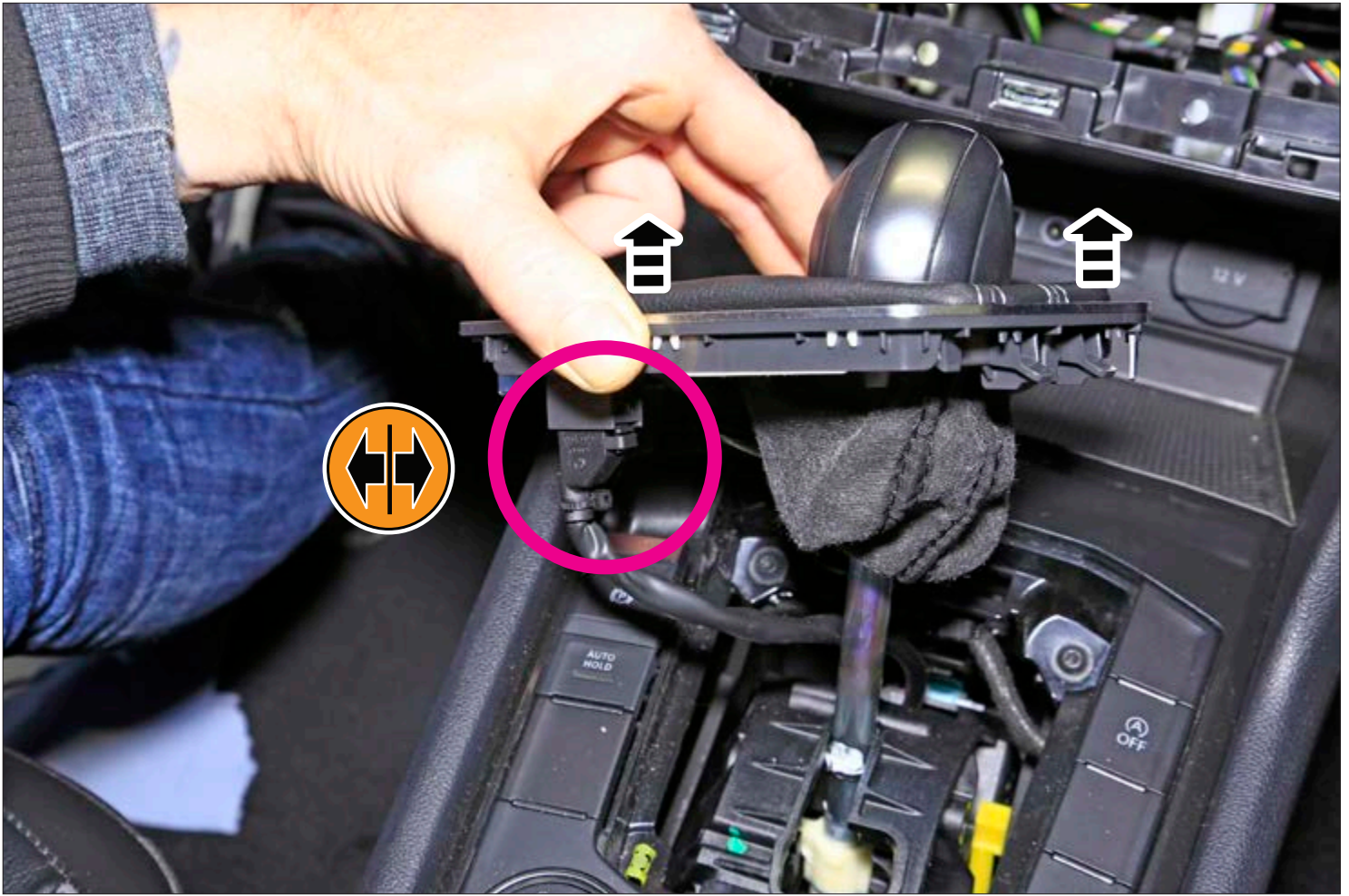


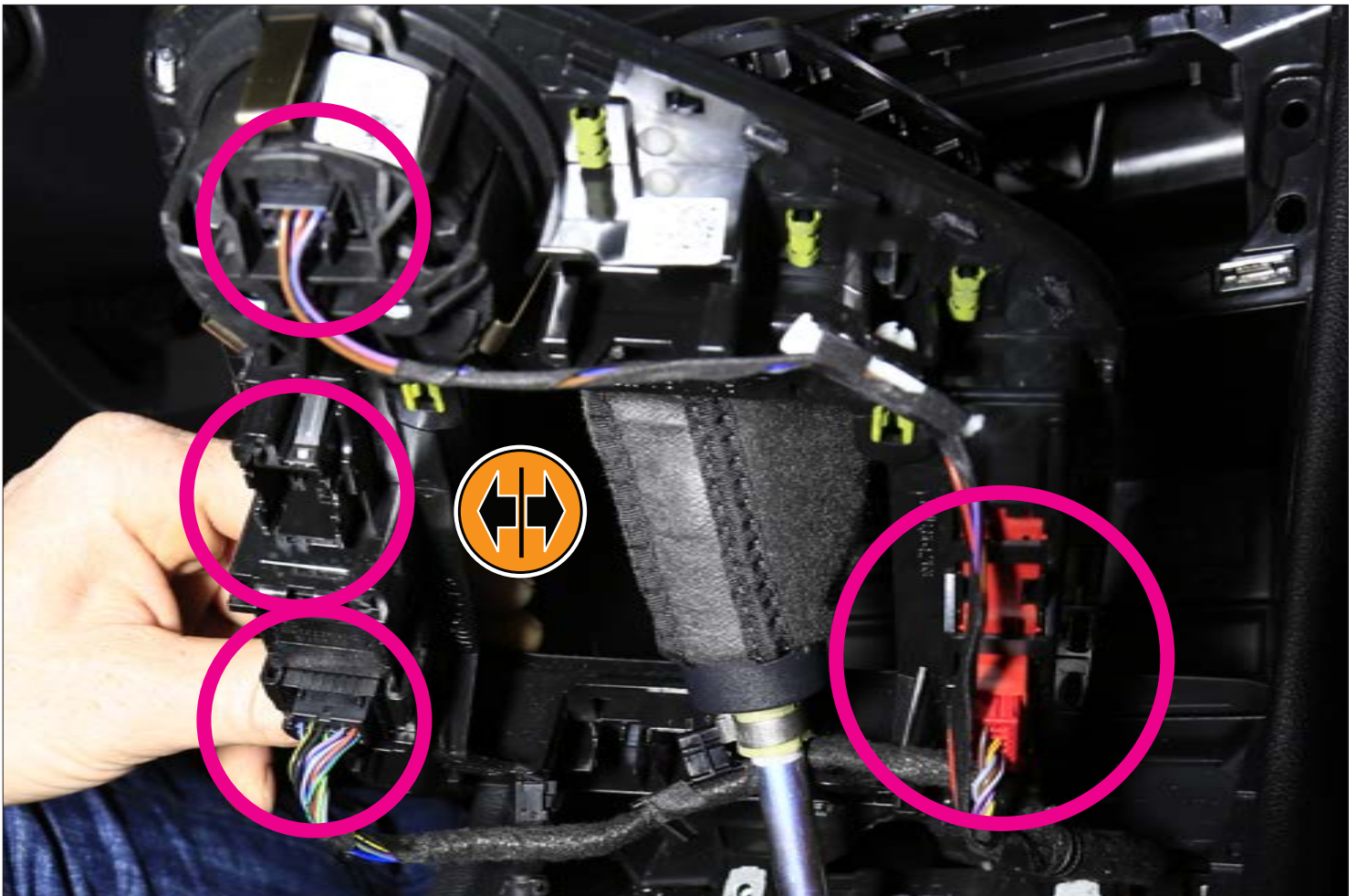


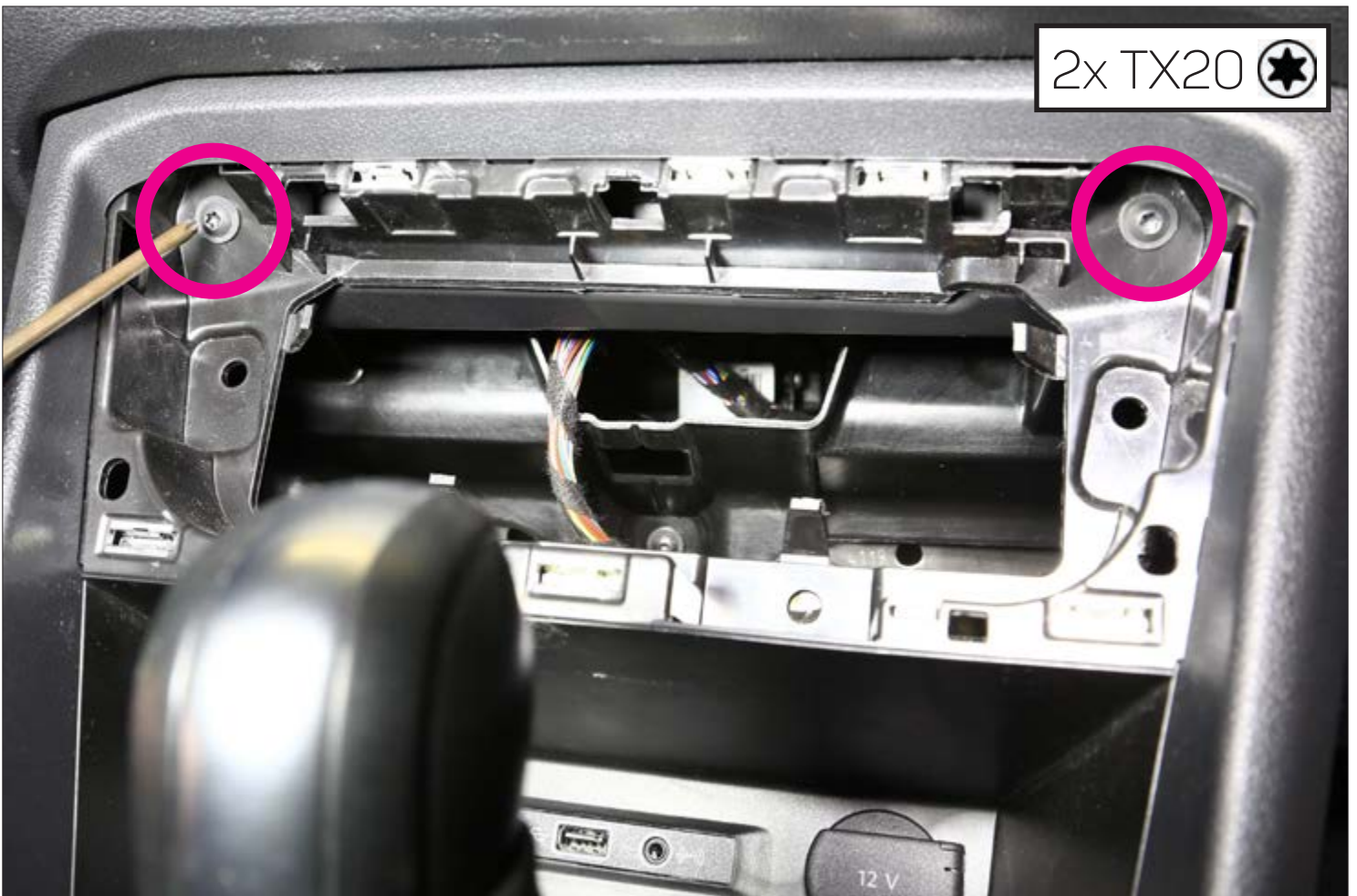




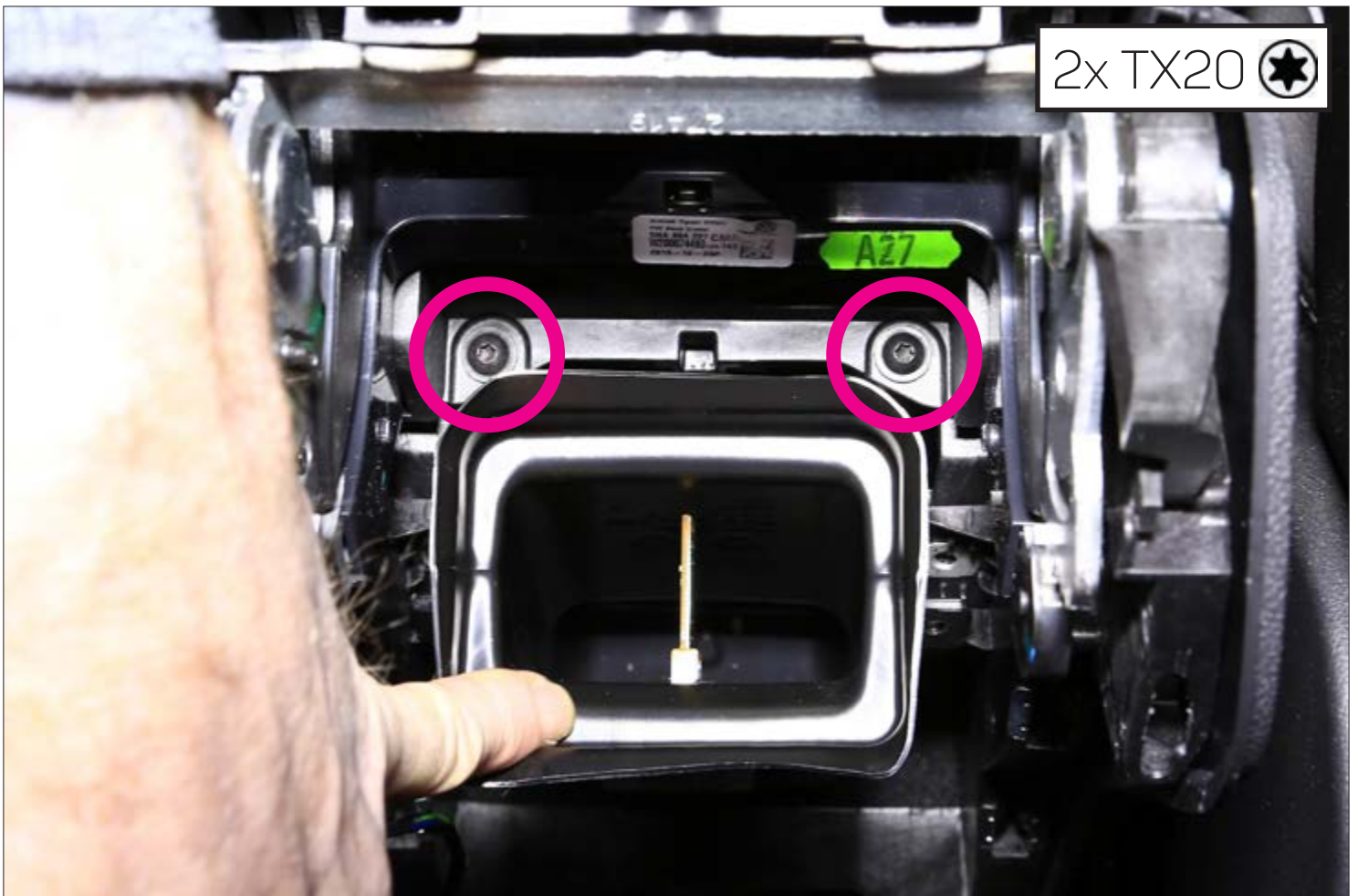
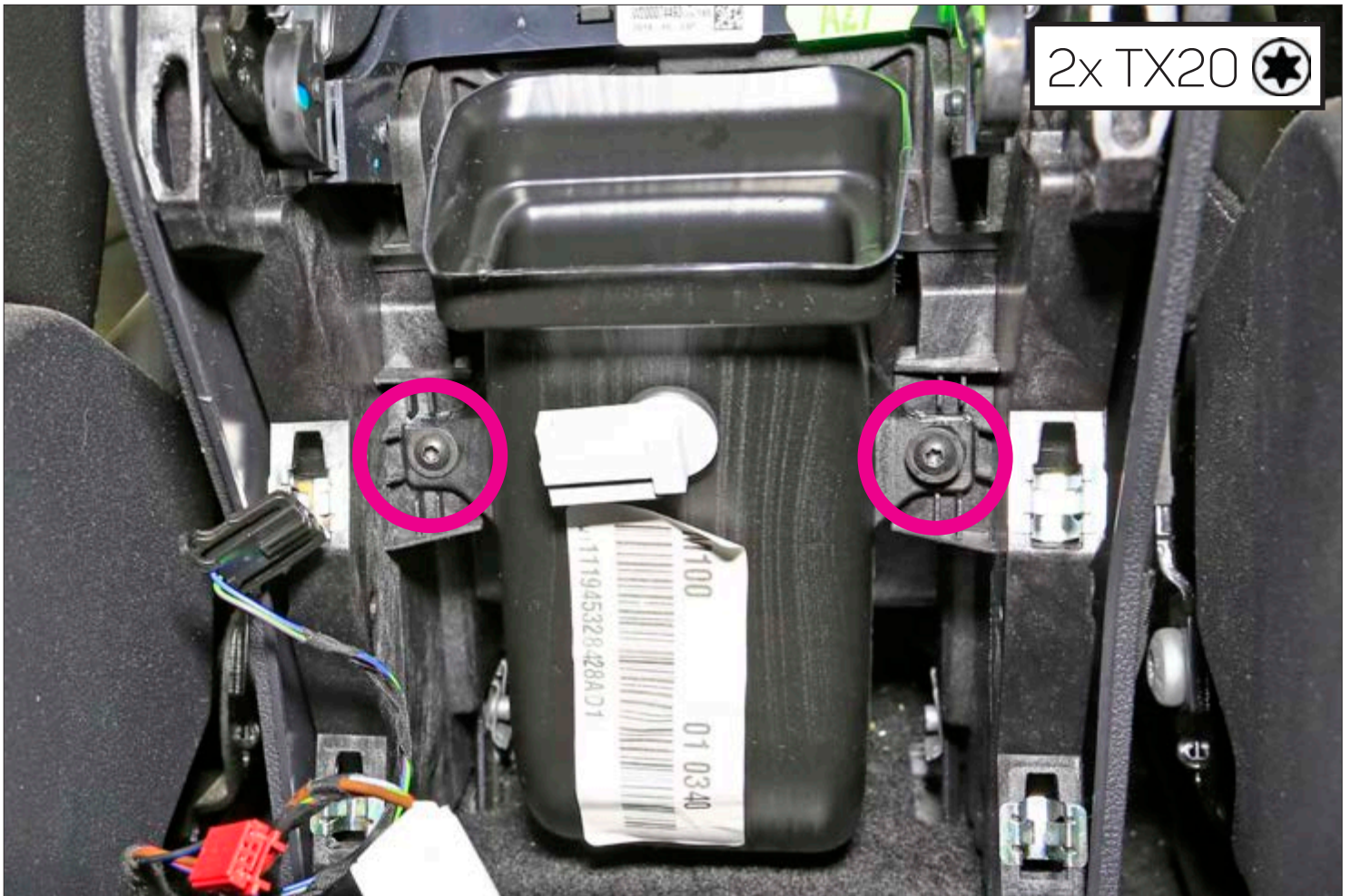




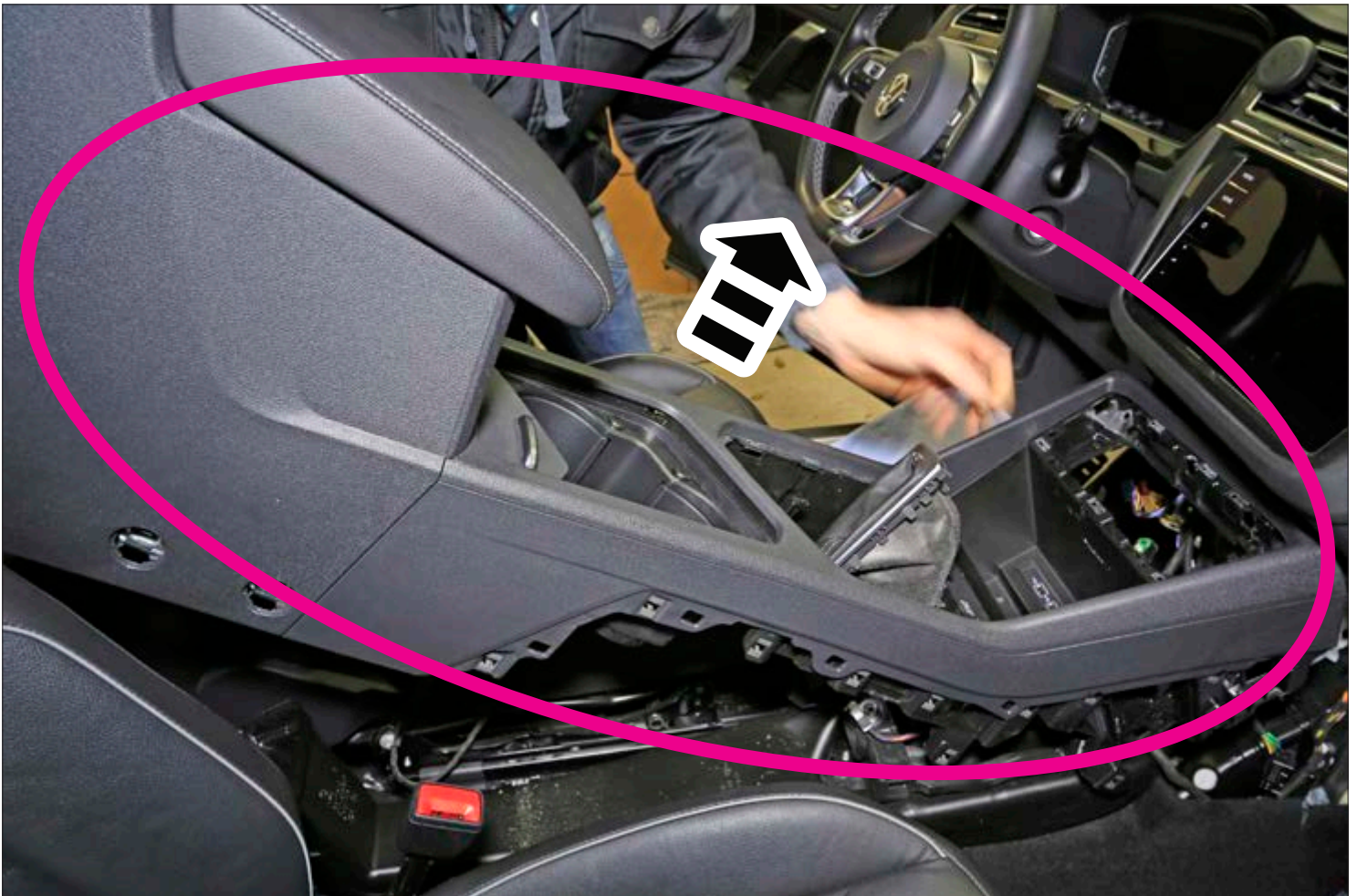
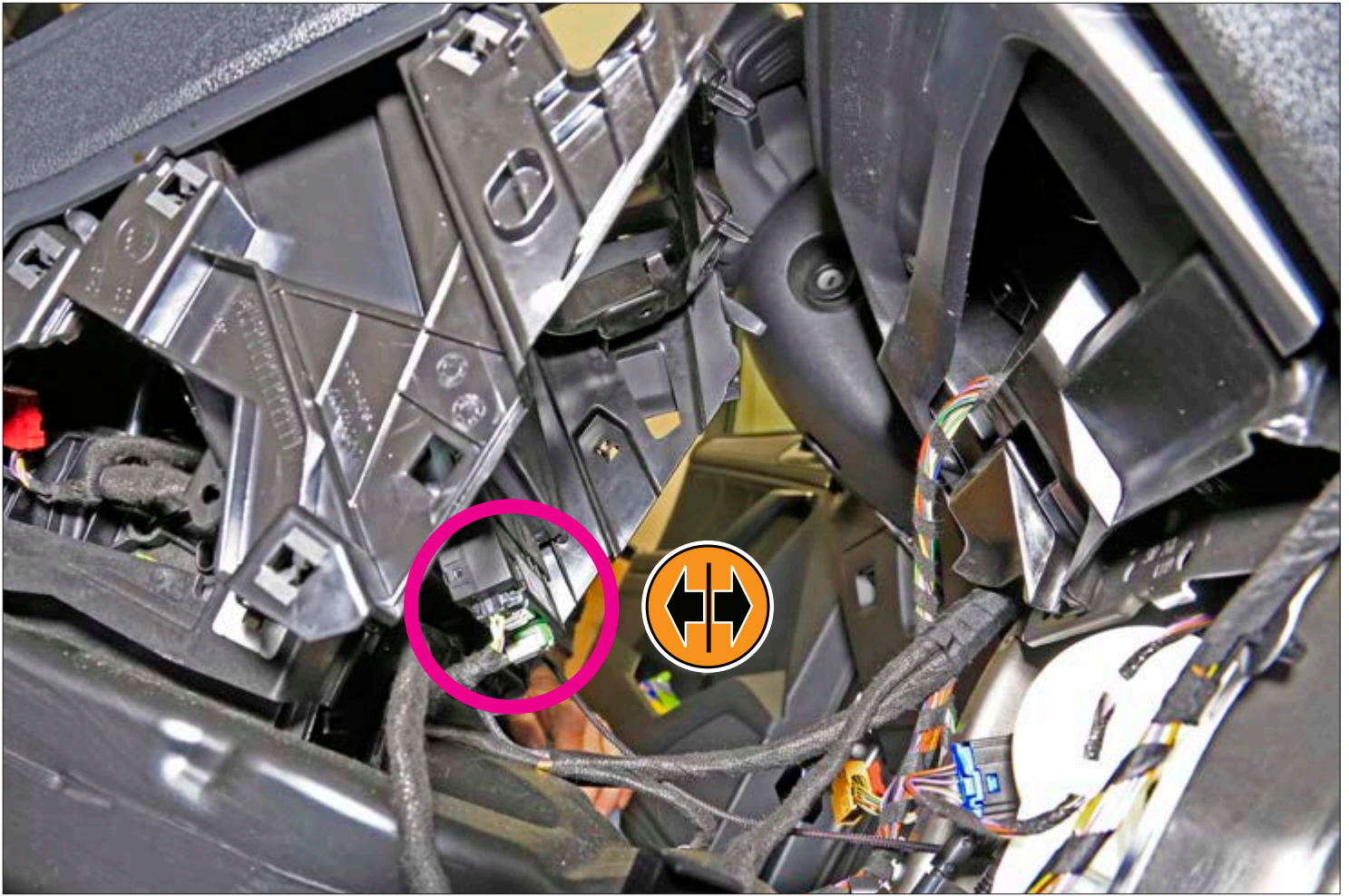




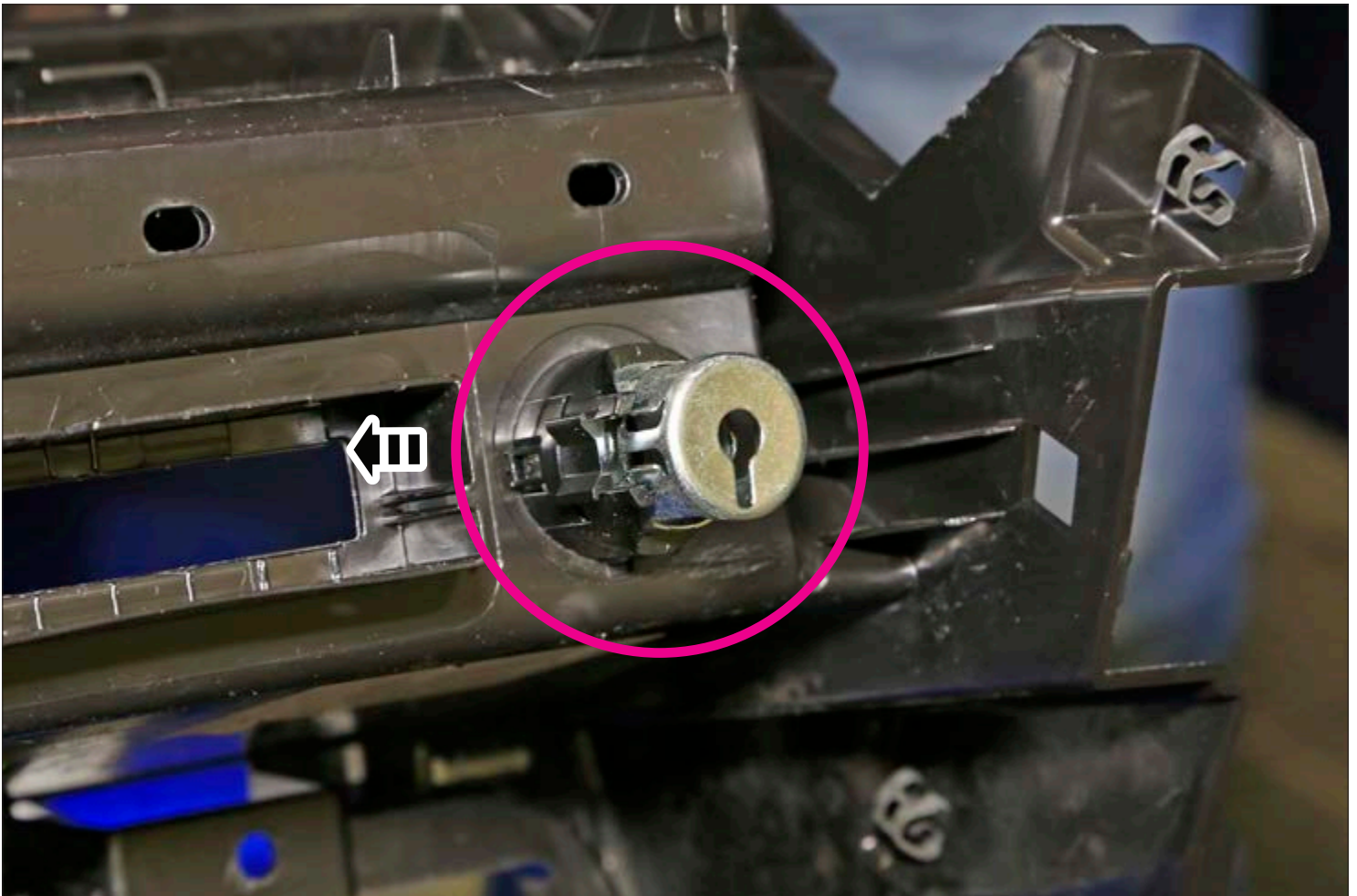










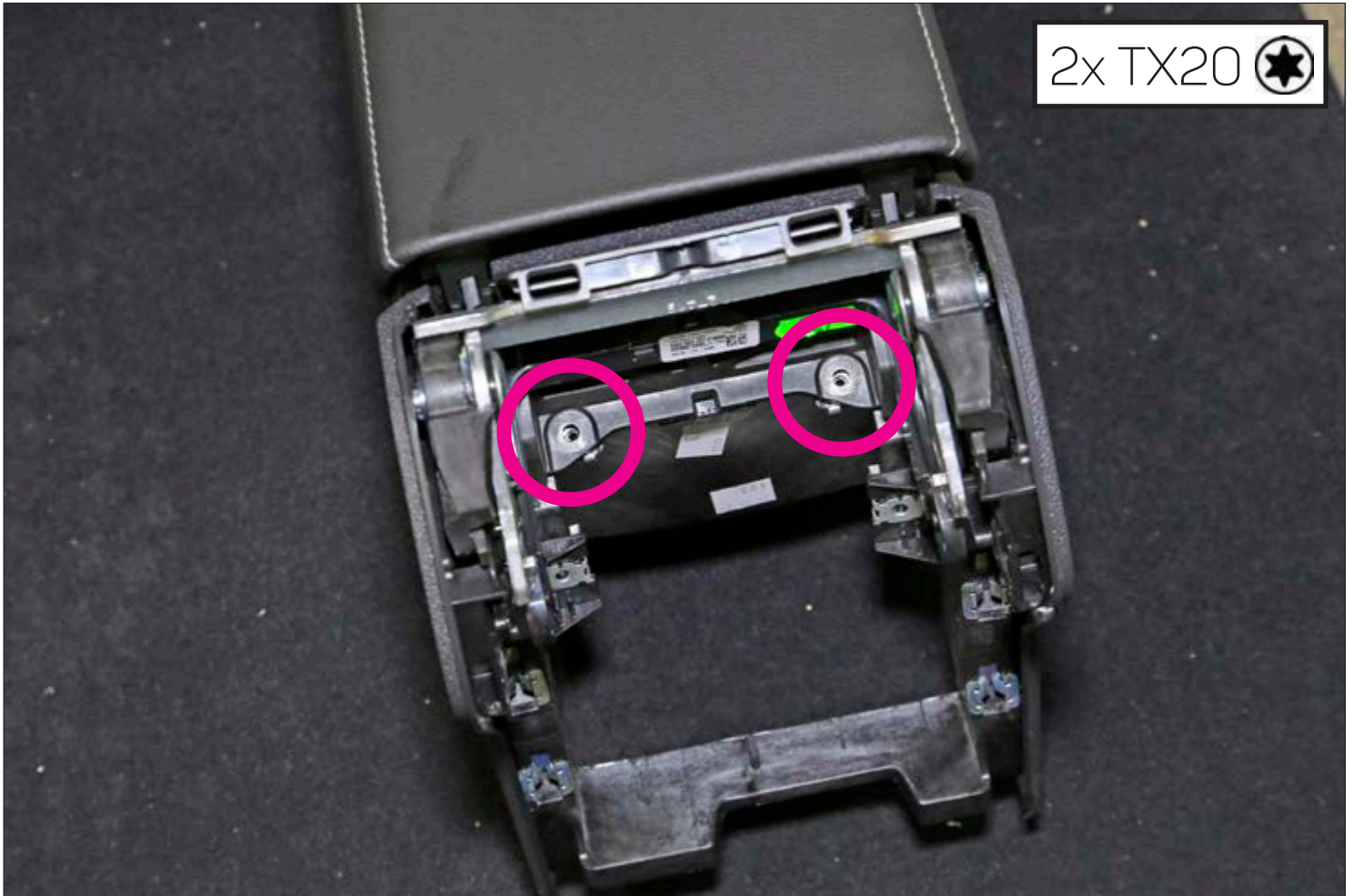




5NB 863 241 F 82V



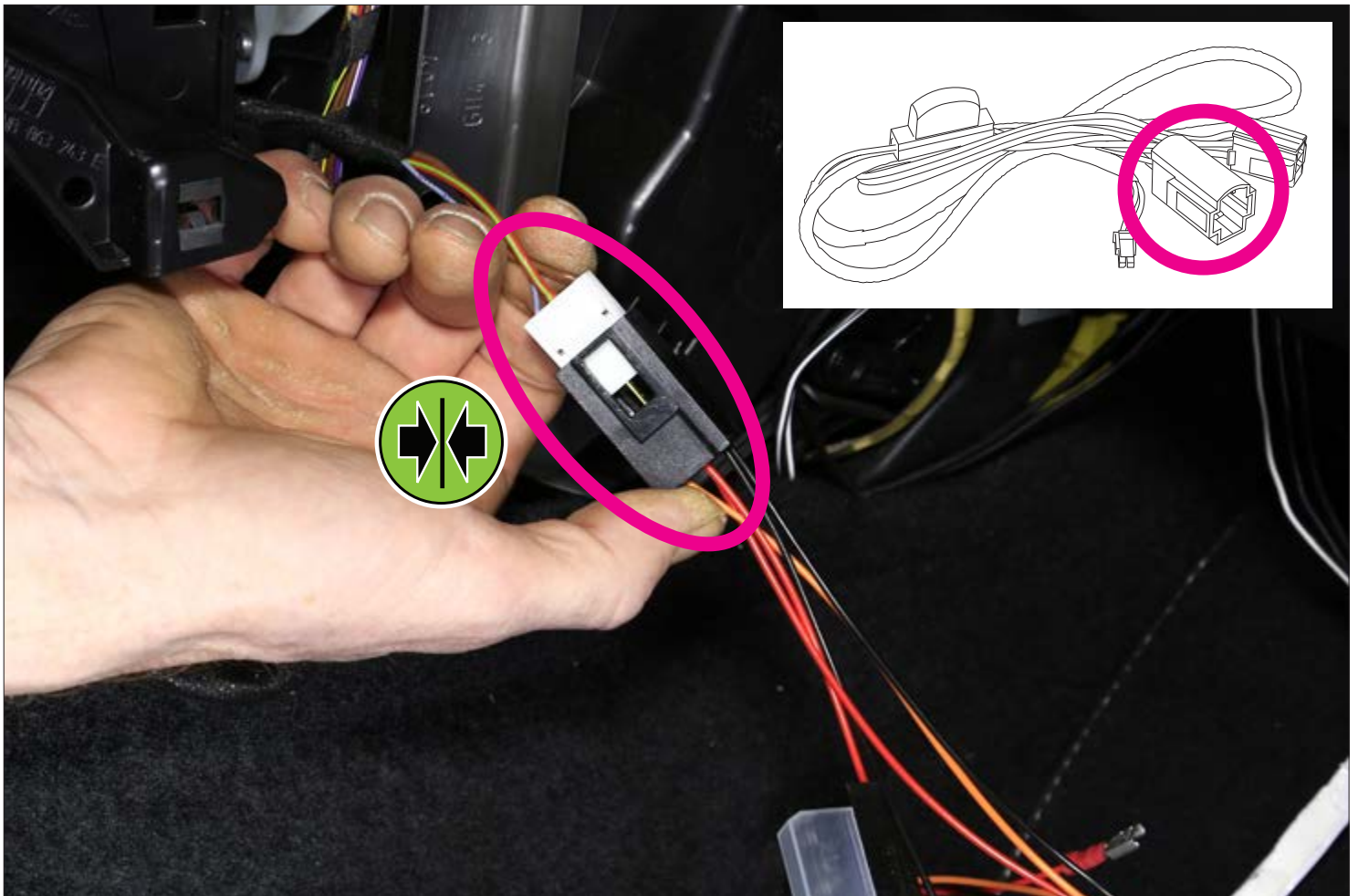
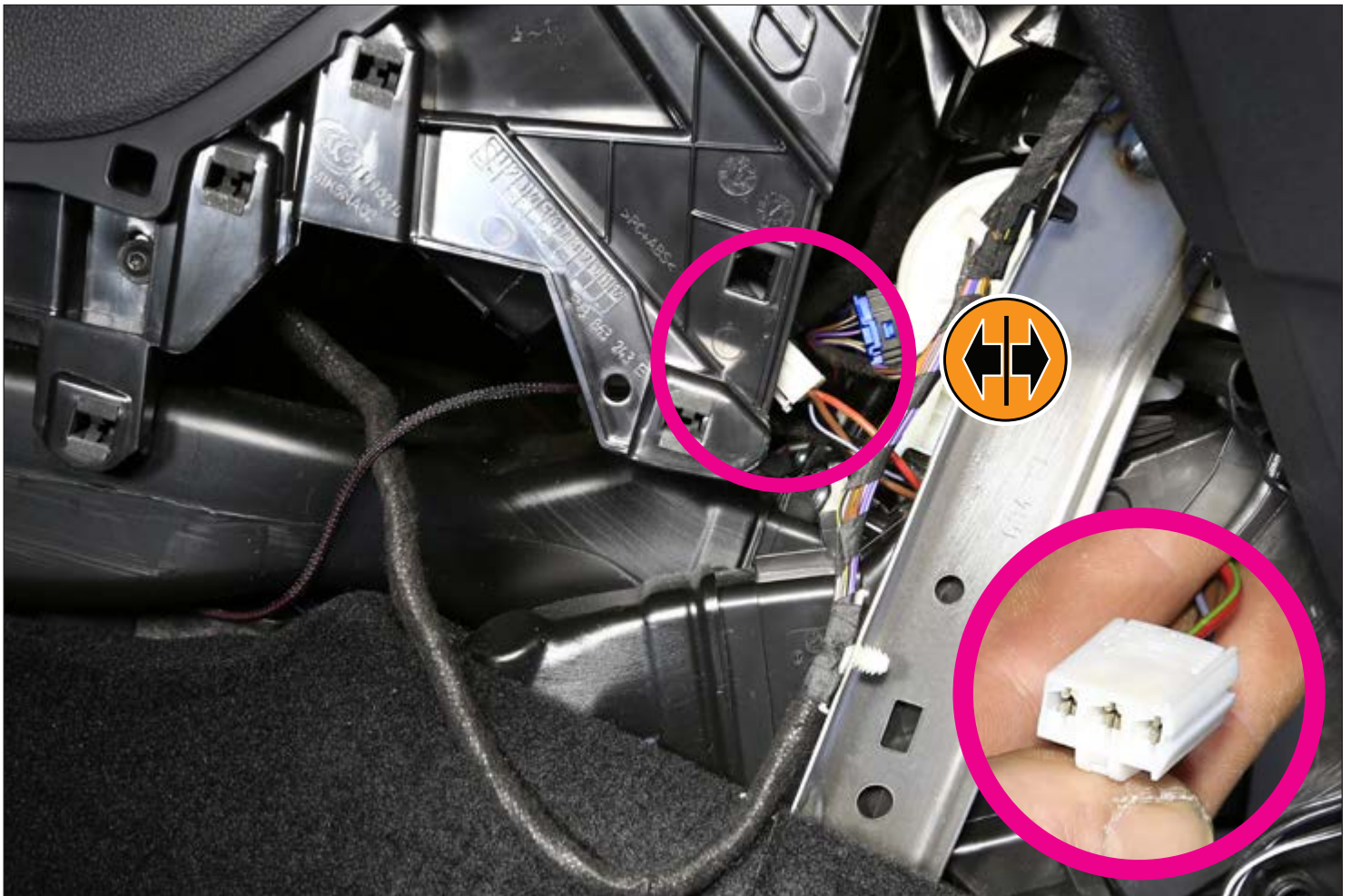


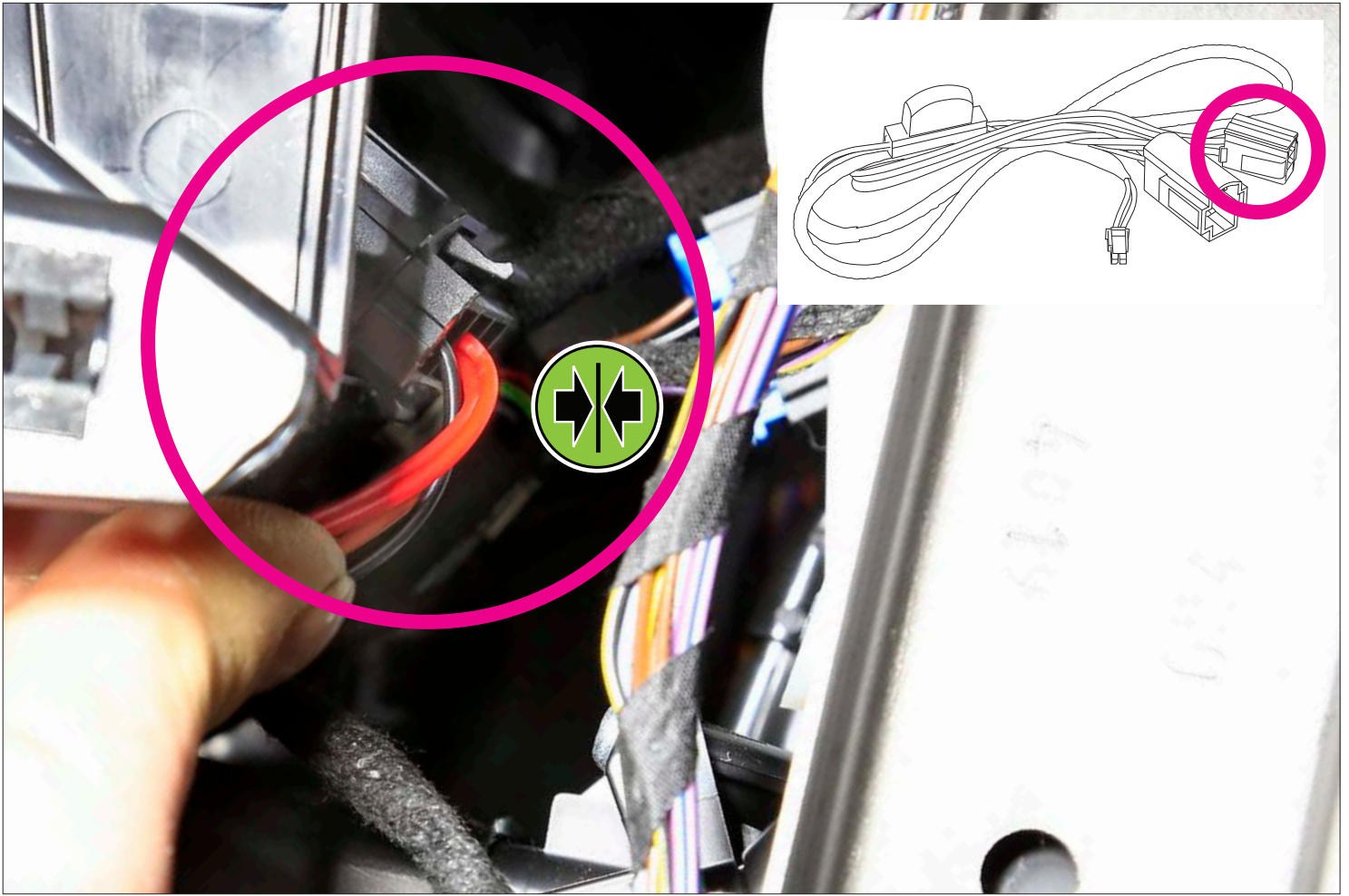


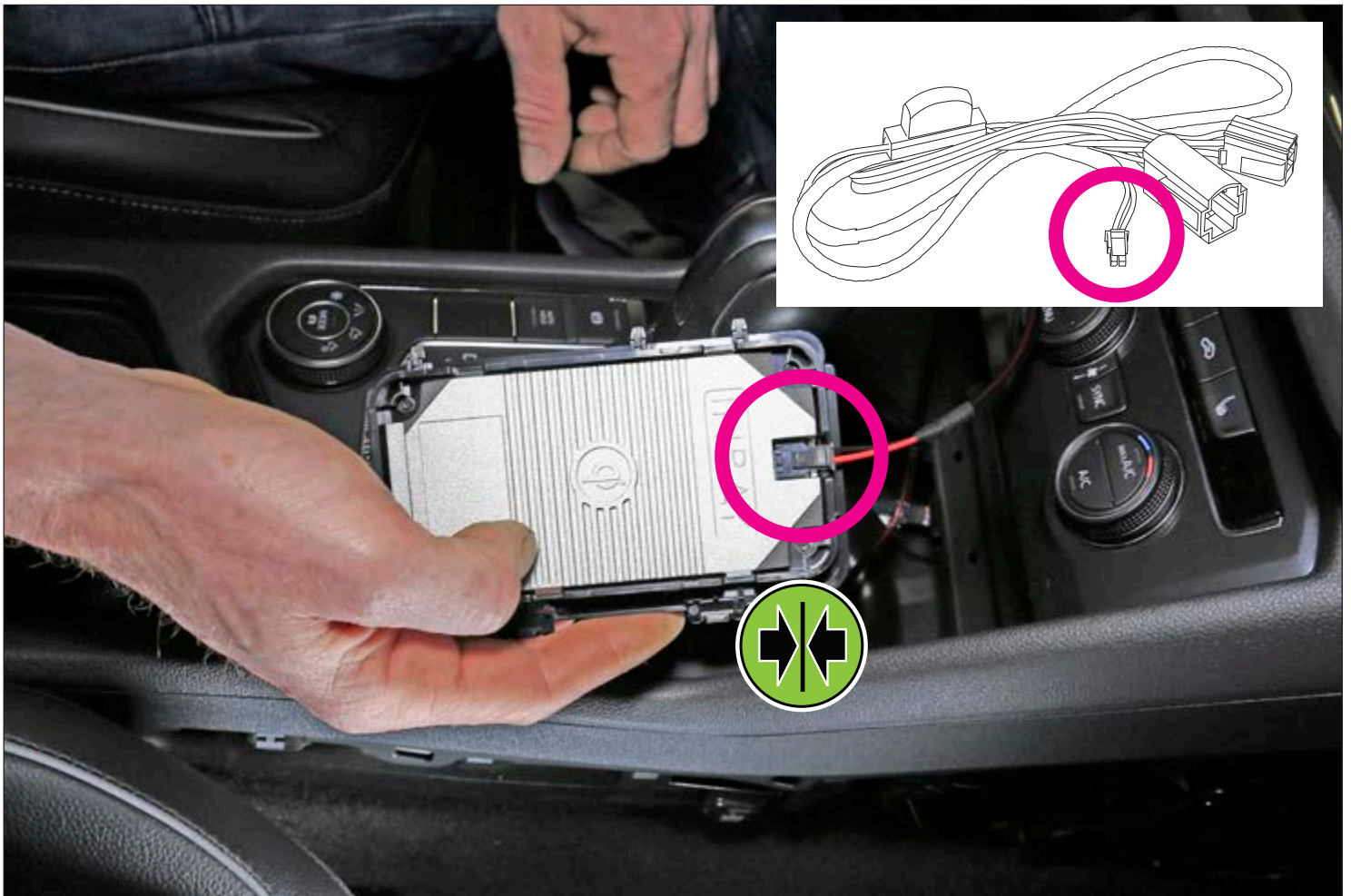
Modelle mit Blinddeckel
Models with blind cover

1x TX20 









Tiguan: 5NB 863 330 A
Tiguan Allspace: 5NN 863 330 A



