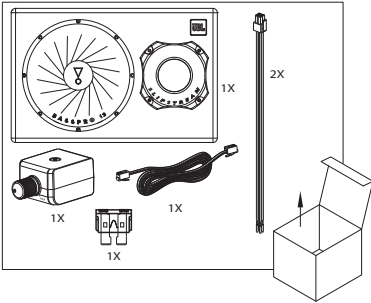


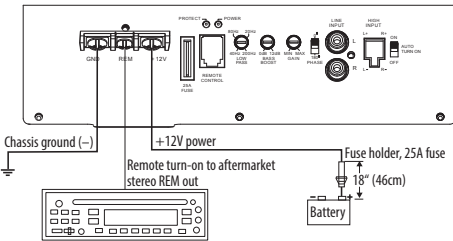
## ABOUT THE MANUAL

This manual displays general installation guidelines. However, please note that proper installation of mobile audio components requires qualified experience. If you do not have the knowledge and tools to successfully perform this installation, we strongly recommend consulting an authorized JBL dealer about your installation options. Keep all instructions and sales receipts for reference.

## WHAT'S IN THE BOX

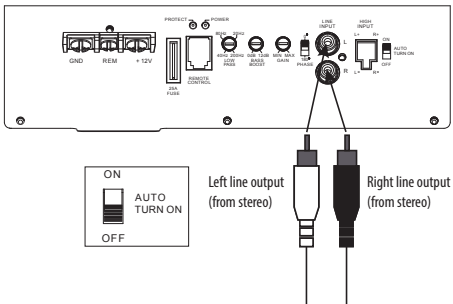


## WIRING FOR POWER AND GROUND



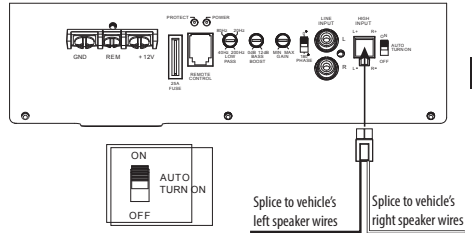
## WIRING FOR AUDIO SIGNAL

### Line-level from aftermarket stereo



**NOTE:** When connecting an aftermarket stereo to the BassPro 12's line-level inputs and remote turn-on wire, set the **AUTO TURN ON** switch to **OFF**.

### Speaker-level from factory or aftermarket stereo



EN

Harness high-level input wire guide	
White/White with black stripe	Left + / Left -
Gray/Gray with black stripe	Right + / Right -

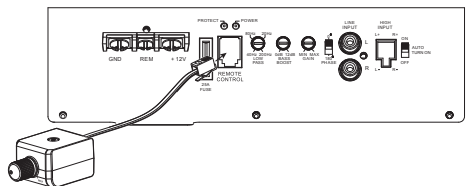
**NOTE:** When connecting a factory or aftermarket stereo to the BassPro 12's speaker-level inputs, set the **AUTO TURN ON** switch to **ON**.

## SETTING GAIN, ADJUSTING PHASE, LOW-PASS FILTER, AND BASS BOOST

1. Start with **GAIN** control set to minimum, and the crossover control rotated midway.
2. Choose music with substantial bass content and turn the volume control on your receiver to 3/4 of its total output.
3. Adjust the **GAIN** control clockwise, listening carefully to the bass output. If you hear distortion, turn the **GAIN** control counterclockwise to decrease the **GAIN**.
4. Switch the **PHASE** back and forth to determine which setting provides the most clean bass output.
5. Adjust the **LOW-PASS** control until the BassPro 12 plays only low-frequency information – you should not hear elements such as vocals coming from the woofer.
6. Adjust the **BASS-BOOST** control clockwise or counterclockwise to suit your taste.



## CONNECTING THE REMOTE BASS CONTROL MODULE



## SPECIFICATIONS

- Driver Complement: 12" (300mm) subwoofer
- Amplifier Power Output: 150 watts RMS, 450 watts peak
- Frequency Response: 30 Hz – 200 Hz
- Maximum Current Draw: 20A
- Quiescent Current Draw: <0.9A
- Input Sensitivity: 0.065 V – 2.0 V line-level input;  
0.35 V – 10V high-level input
- Crossover Frequency: 40 Hz – 200 Hz
- Crossover Slope: 12 dB/octave
- Bass Boost: 0 dB to +12 dB @ 45Hz
- Fuse: 25A
- Dimensions (W x H x D): 22-1/2" x 14-5/8" x 9-3/16" D1;  
12-1/6" D2 (570mm x 371mm x 232mm D1; 305mm D2)
- Weight: 34.3 lb. (15.56 kg)

## TROUBLESHOOTING

### No audio and POWER indicator is off.

- No voltage at BATT+ and/or REM terminals, or bad or no ground connection. Check voltages at amplifier terminals with VOM.

### No audio and PROTECT indicator illuminated.

- DC voltage on amplifier output. Amplifier may need service; see enclosed warranty card for service information.

### No audio and PROTECT and POWER indicators illuminated.

- Voltage less than 9V on BATT+ connection. Check vehicle charging system.

### No audio and PROTECT indicator is on.

- Amplifier is overheated. Make sure amplifier cooling is not blocked at mounting location. Or, there may be voltage greater than 16V (or less than 9V) on BATT+ connection. Check vehicle charging system.

### Amplifier fuse keeps blowing.

- The wiring is connected incorrectly or there is a short circuit. Check wiring connections.

### Distorted audio.

- GAIN is not set properly. Check setting. Check wires for shorts or grounds. Amplifier or source unit may be defective.

### Music lacks dynamics or "punch."

- If using speaker-level inputs, check connections for proper polarity. Switch PHASE back and forth between 0° and 180° and leave on setting with best sound.

### Engine noise—whining or clicking—in system when the engine is on.

- Amplifier is picking up alternator noise. First, check ground connection on the amplifier – a loose or improper ground is one of the main causes for noise. Turn down GAIN. Move RCA audio cables away from power wires. Installing an alternator noise filter on power line between battery and alternator might also be necessary.

